



TALIUS[®]

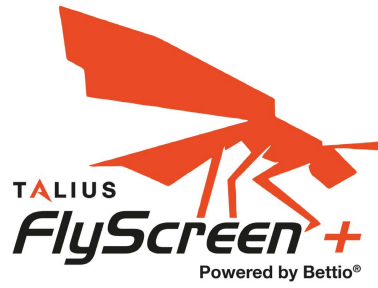
2026

FLYSCREEN

INSTALLATION MANUAL

Table of Contents

■ FlyScreen+ Installation V1 With Screws - 1 Door	1
■ FlyScreen+ Installation V1 With Tape - 1 Door	5
■ FlyScreen+ Installation V2 - 1 Door	9
■ FlyScreen+ Installation V3 - 1 Door.....	13
■ FlyScreen+ Installation V4 - 1 Door.....	18
■ FlyScreen+ Installation V1 With Screws - 2 Doors	23
■ FlyScreen+ Installation V1 With Tape - 2 Doors	27
■ FlyScreen+ Installation V2 - 2 Doors	31
■ FlyScreen+ Installation V3- 2 Doors	36
■ FlyScreen+ Installation V4 - 2 Doors	41
■ FlyScreen 2D Installation.....	47

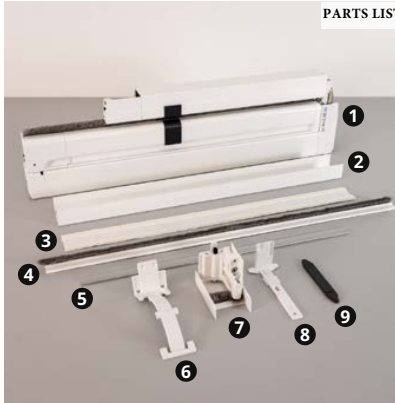


INSTALLATION INSTRUCTIONS METHOD 1 - 1 DOOR WITH SCREWS

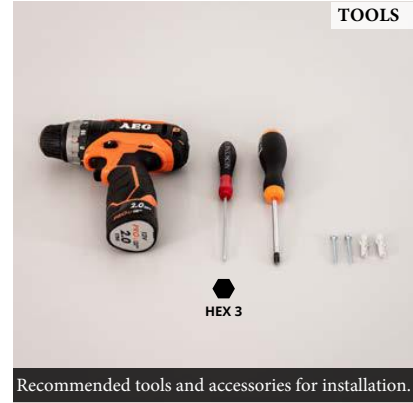
PARTS LIST

- 1 Fly screen
- 2 Adjuster profile
- 3 Double-sided tape for Adjuster profile
- 4 Side profile (optional)
- 5 Sliding profile (optional)
- 6 Push spring
- 7 Push group
- 8 Fixing Plate
- 9 Floor plate

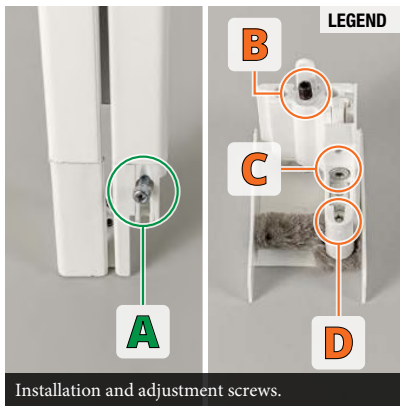
PARTS LIST



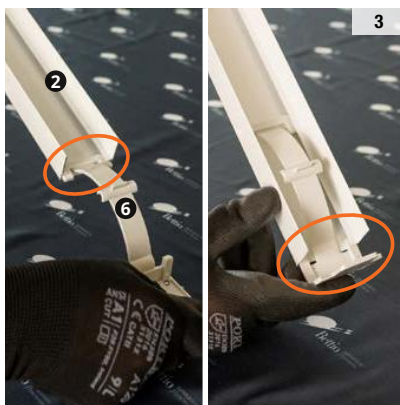
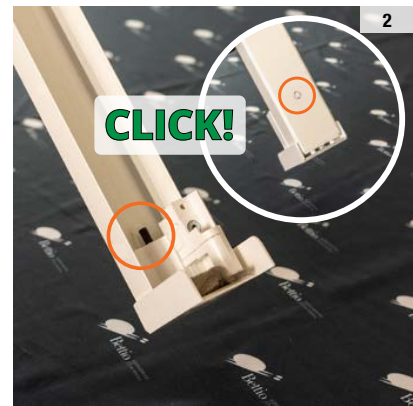
TOOLS

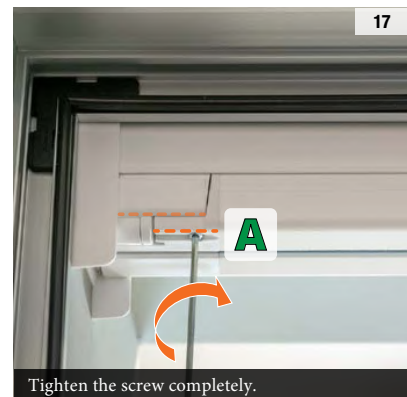
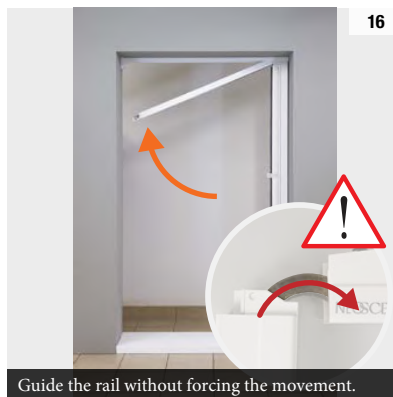
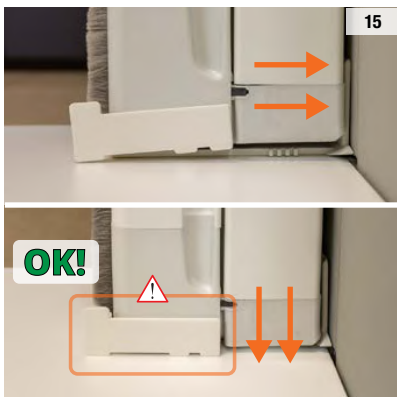
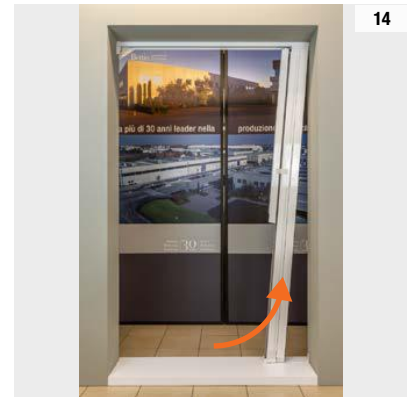
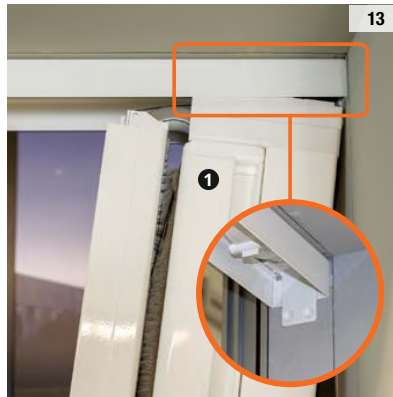
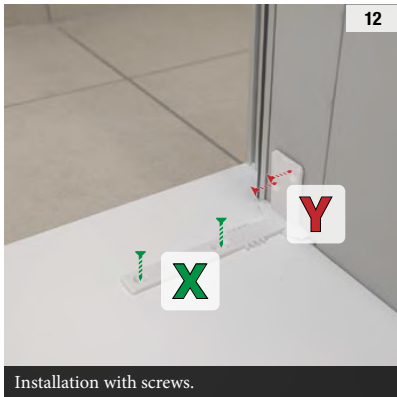
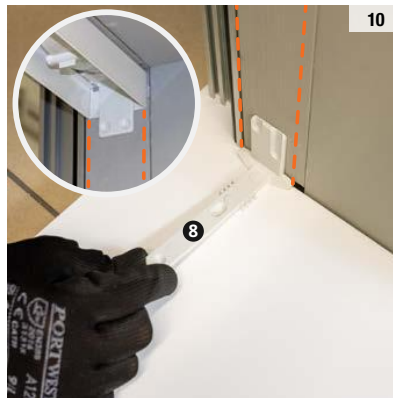
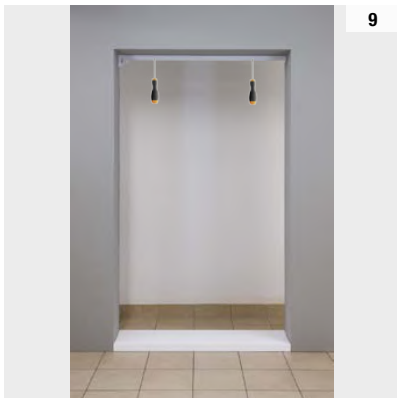
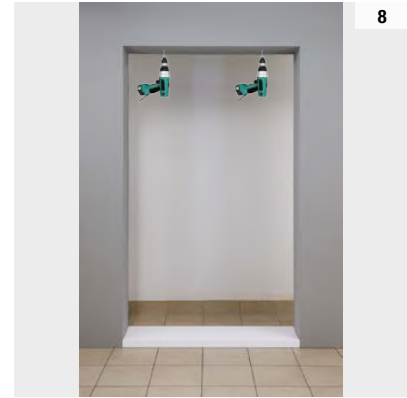
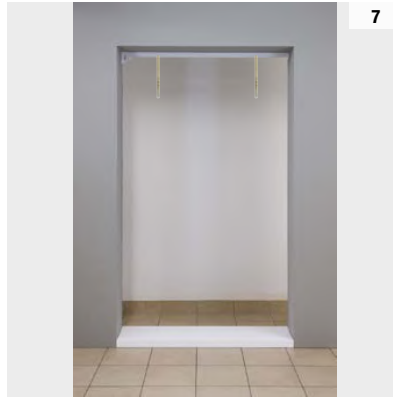
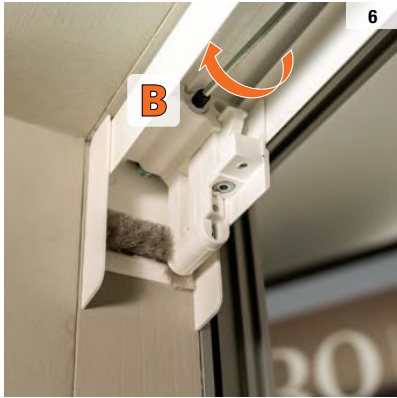


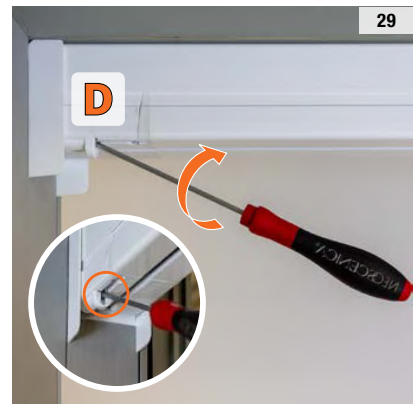
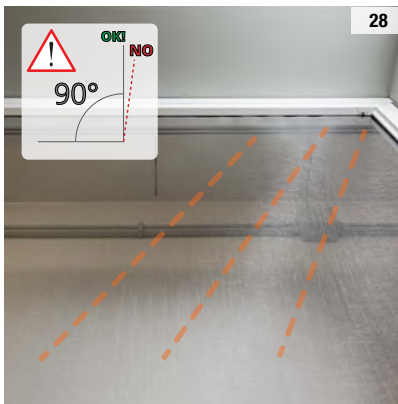
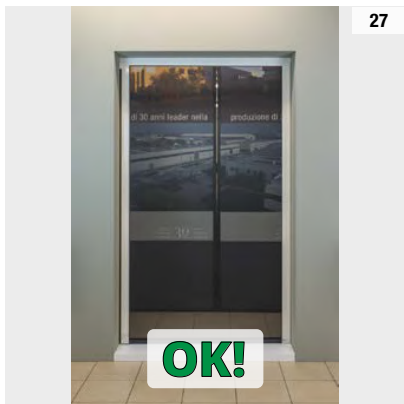
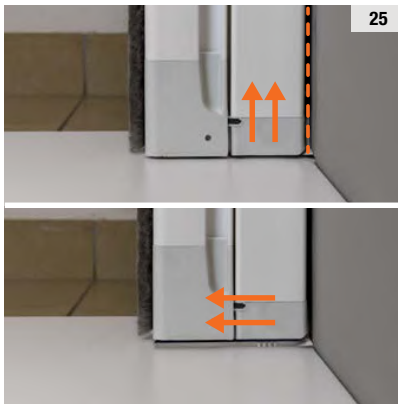
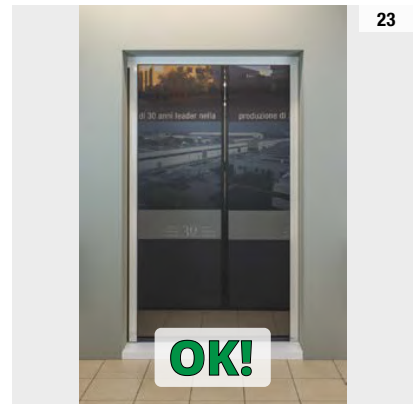
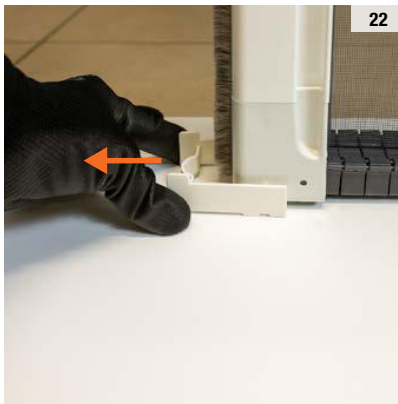
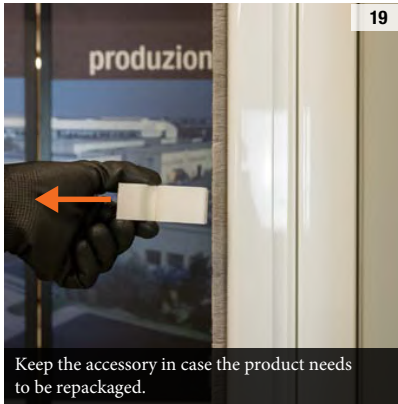
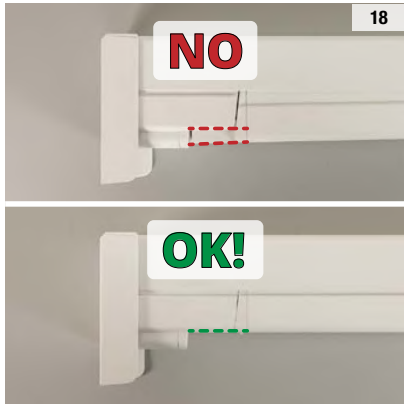
Recommended tools and accessories for installation.

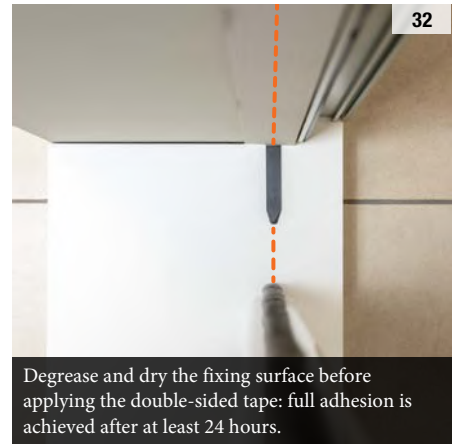
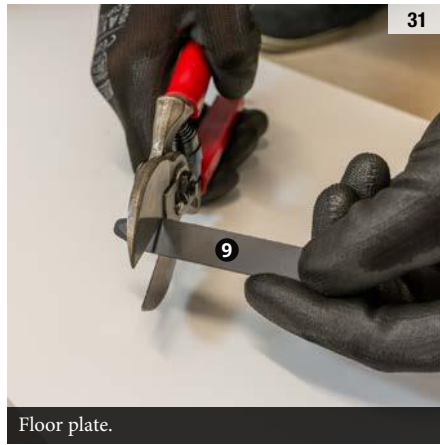
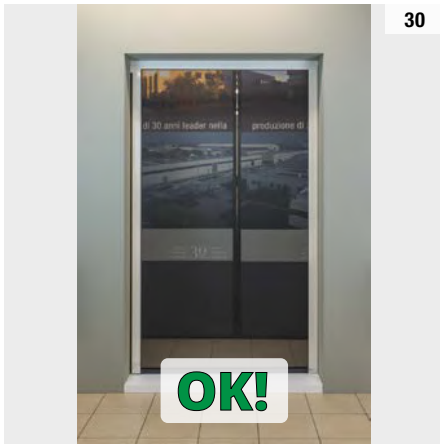


Installation and adjustment screws.

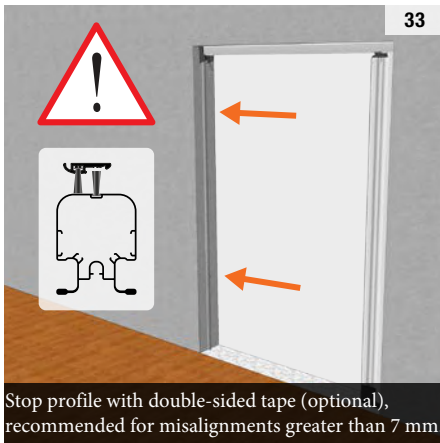




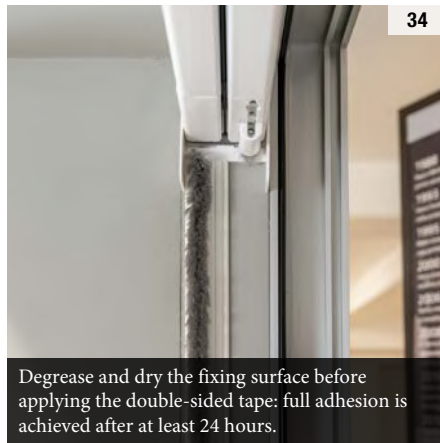




Degrease and dry the fixing surface before applying the double-sided tape: full adhesion is achieved after at least 24 hours.



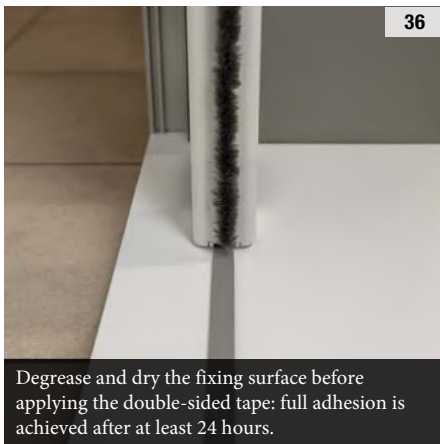
Stop profile with double-sided tape (optional), recommended for misalignments greater than 7 mm.



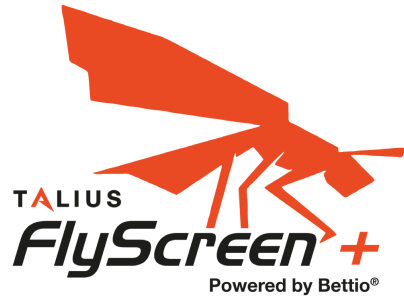
Degrease and dry the fixing surface before applying the double-sided tape: full adhesion is achieved after at least 24 hours.



Sliding profile. Complementary accessory. Installation at discretion.

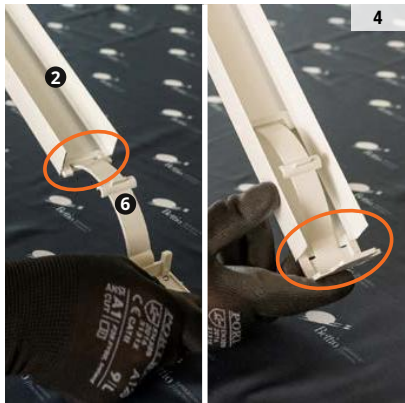
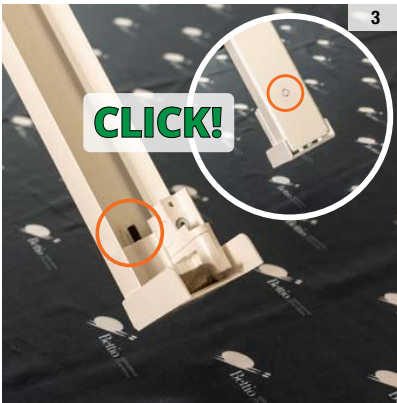
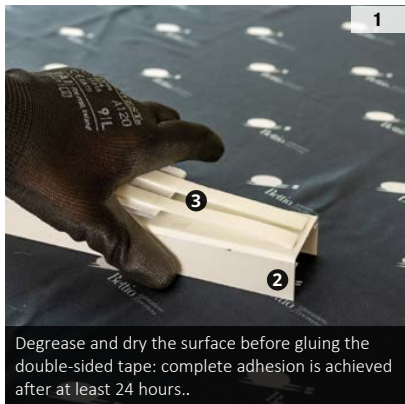
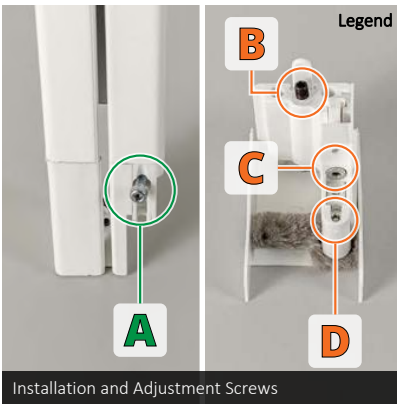
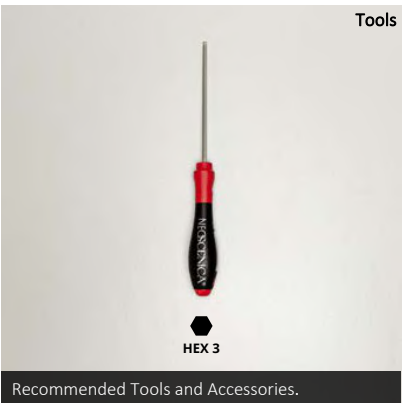
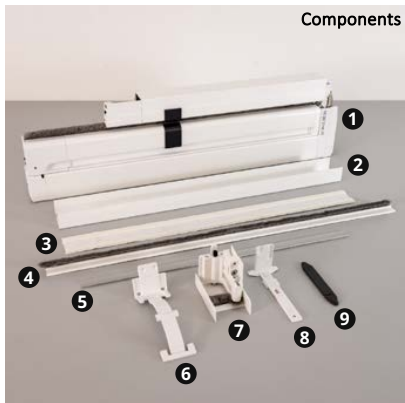


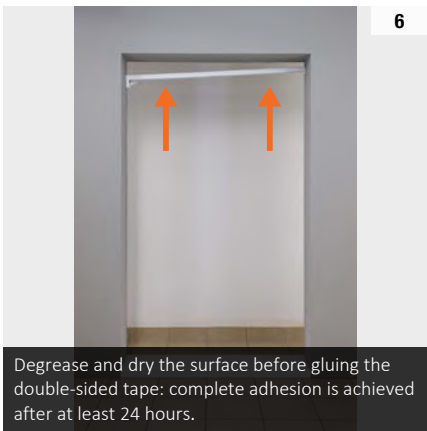
Degrease and dry the fixing surface before applying the double-sided tape: full adhesion is achieved after at least 24 hours.



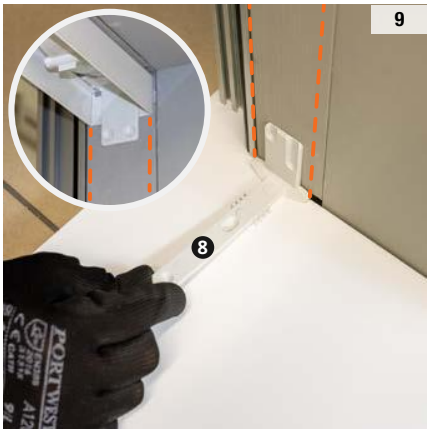
INSTALLATION INSTRUCTIONS
METHOD 1 – 1 DOOR WITH TAPE

- Components**
- 1 FlyScreen
 - 2 Adjuster Profile
 - 3 Double Sided Tape
 - 4 Side Profile (Optional)
 - 5 Sliding Profile (Optional)
 - 6 Tension Spring
 - 7 Push Assembly
 - 8 Fixing Plate
 - 9 Floor Plate

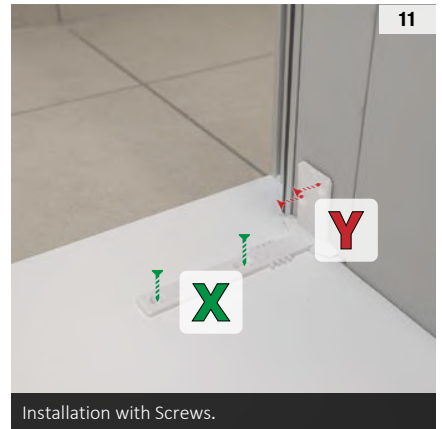




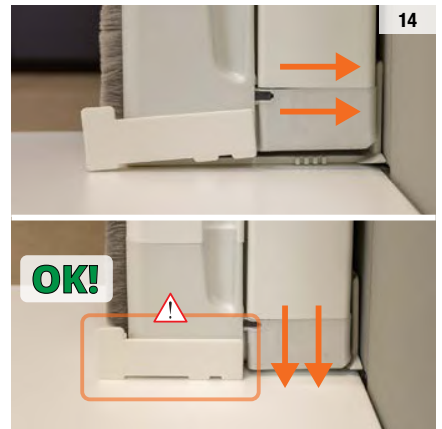
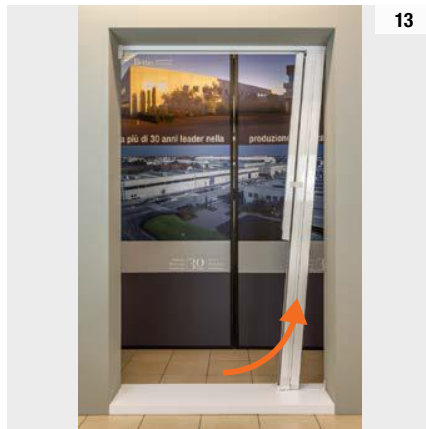
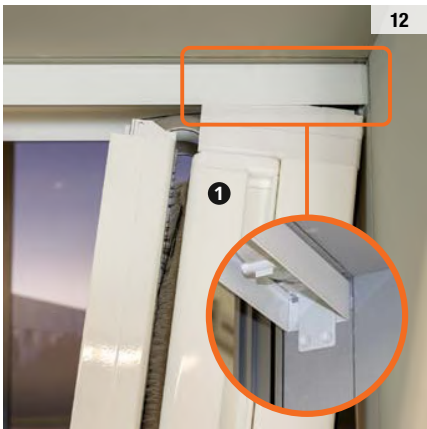
Degrease and dry the surface before gluing the double-sided tape: complete adhesion is achieved after at least 24 hours.



Installation with double-sided tape. Degrease and dry the mounting surface before applying the double-sided tape: full adhesion is achieved after at least 24 hours..



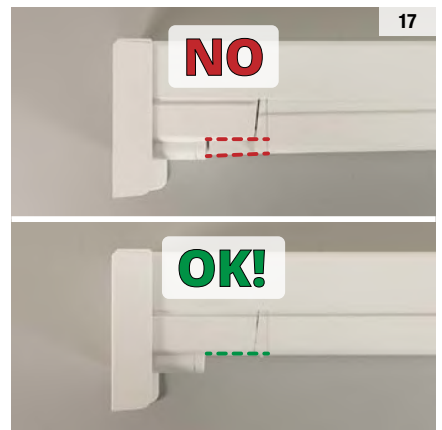
Installation with Screws.

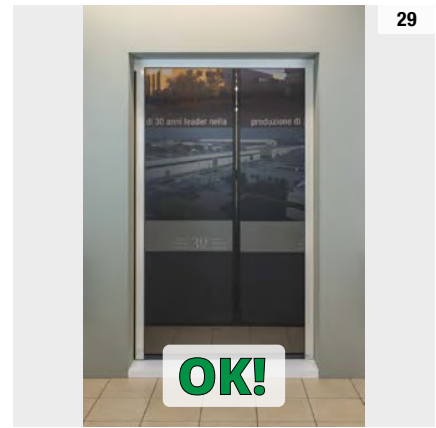
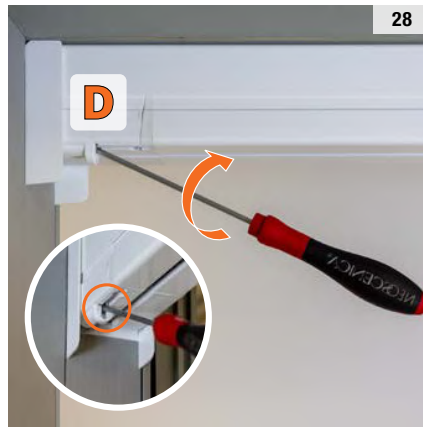
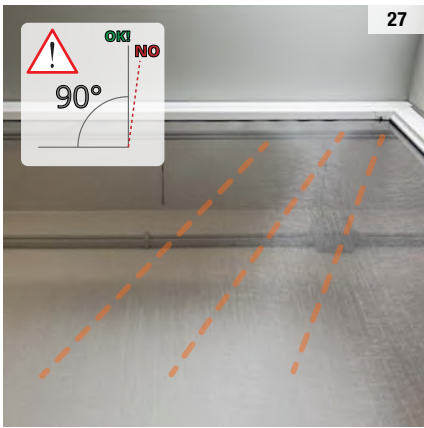
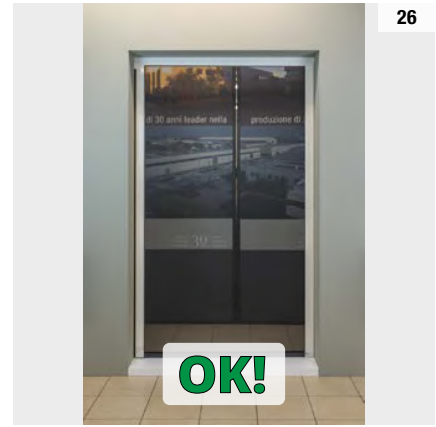
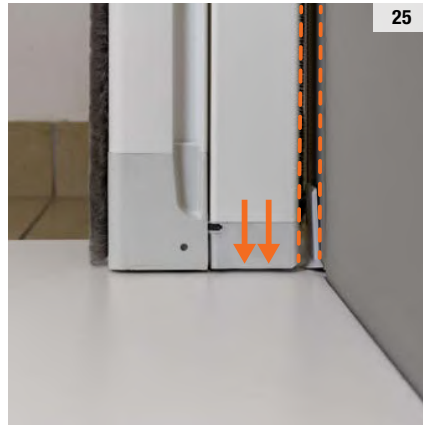
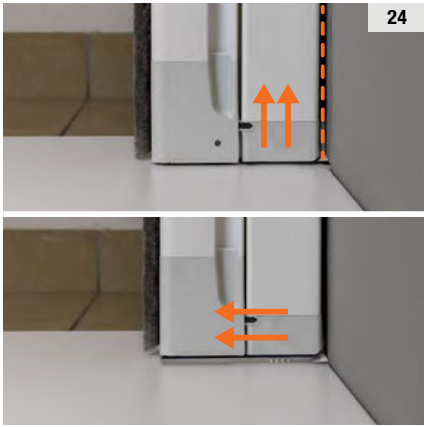
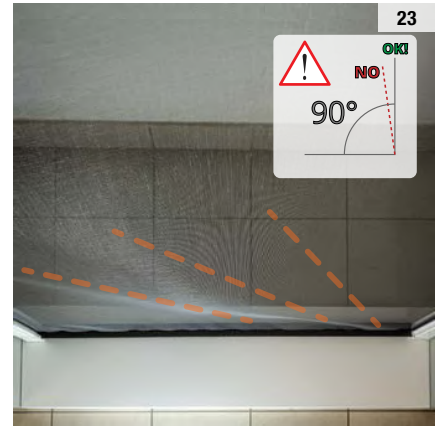
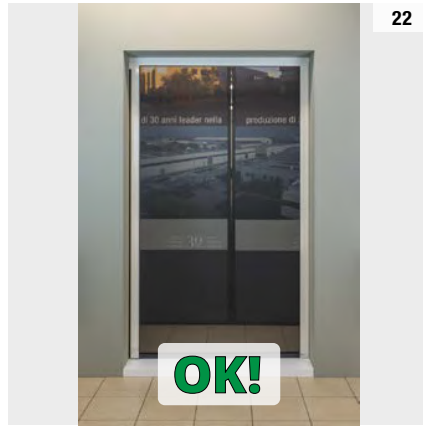
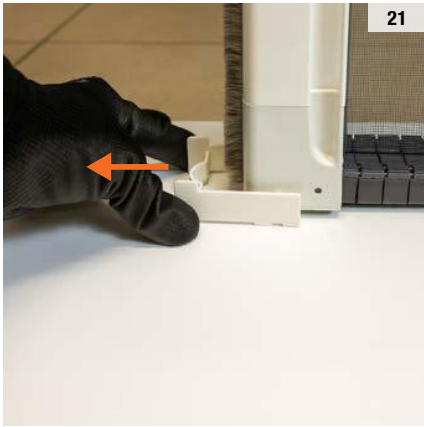


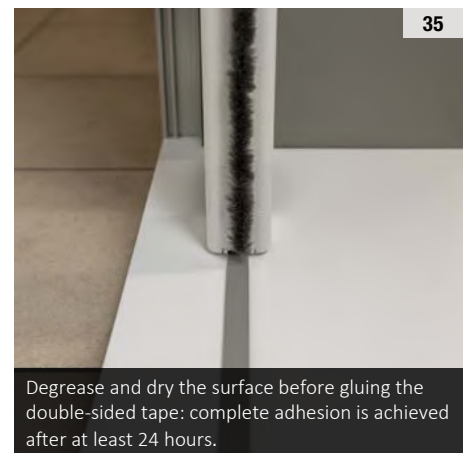
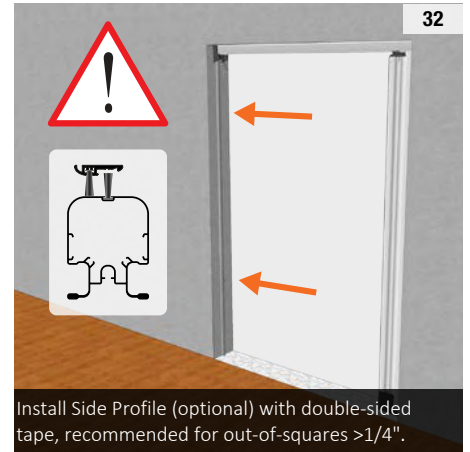
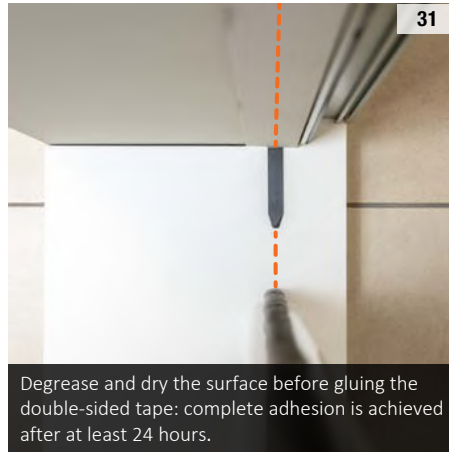
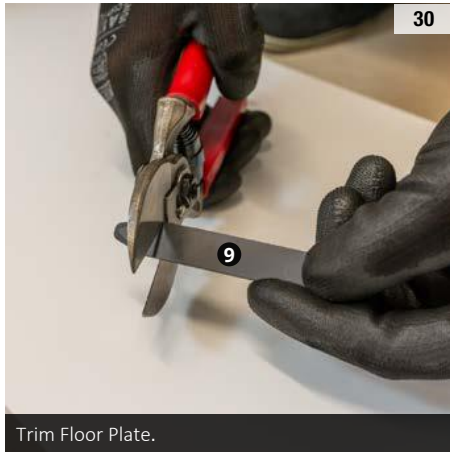
Lift the guide without forcing the movement.

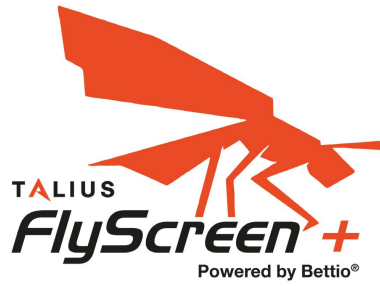


Tighten the Screw Completely.







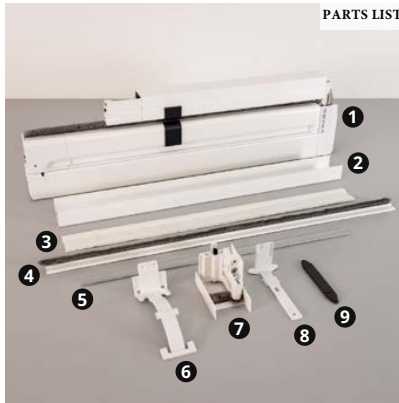


INSTALLATION INSTRUCTIONS METHOD 2 – 1 DOOR WITH SCREWS

PARTS LIST

- 1 Fly screen
- 2 Adjuster profile
- 3 Double-sided tape for compensation profile
- 4 Side profile (optional)
- 5 Sliding profile (optional)
- 6 Push spring
- 7 Push group
- 8 Fixing Plate
- 9 Floor plate

PARTS LIST

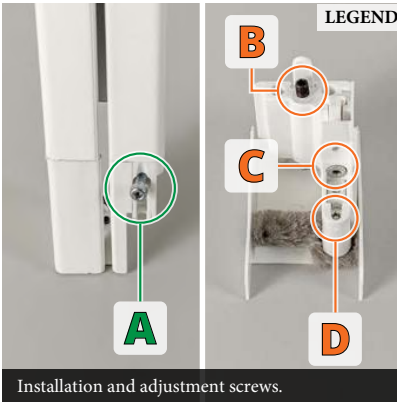


TOOLS

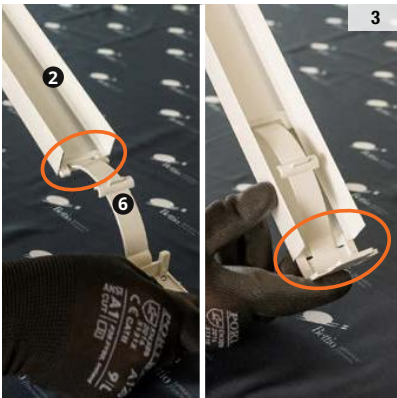
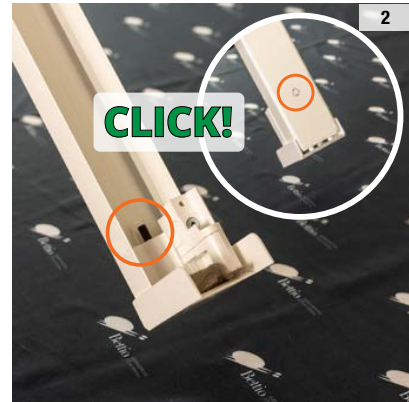


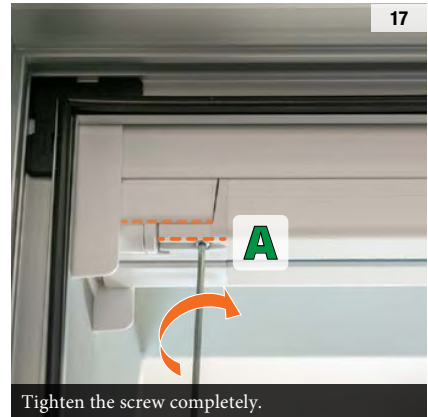
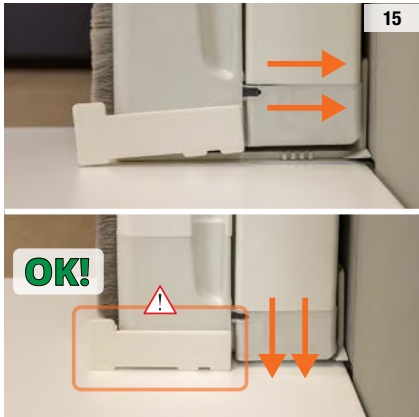
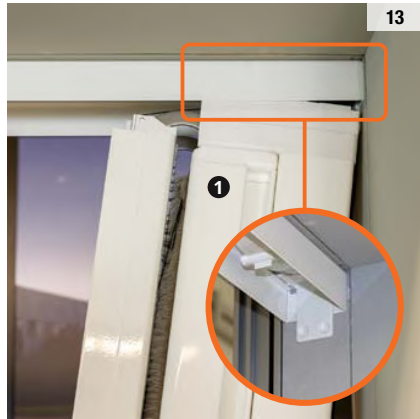
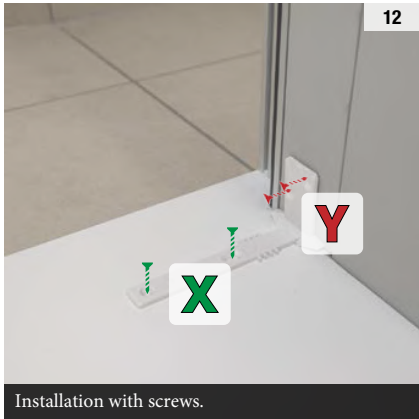
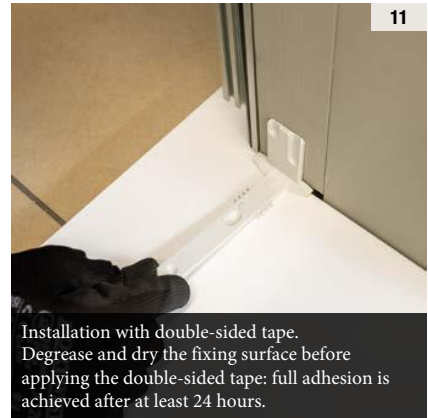
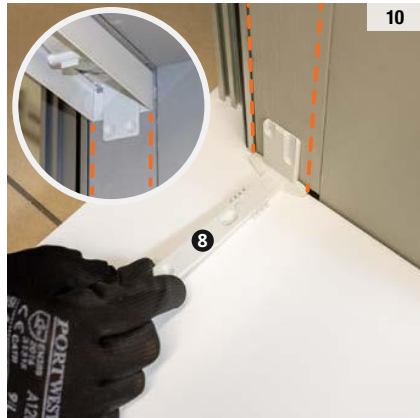
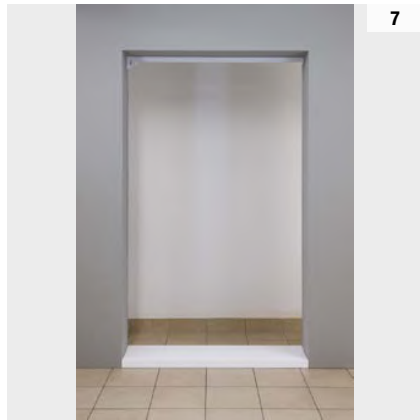
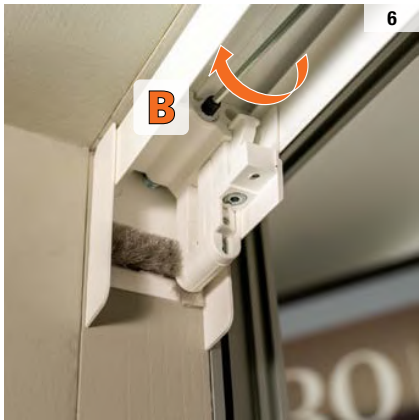
Recommended tools and accessories for installation.

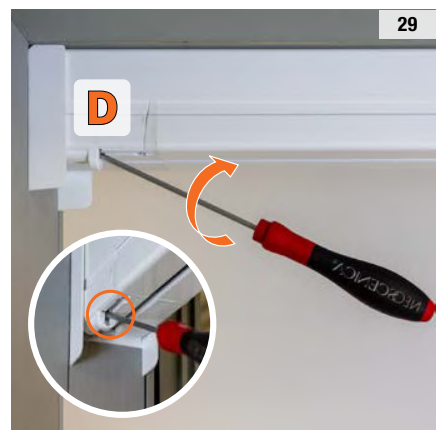
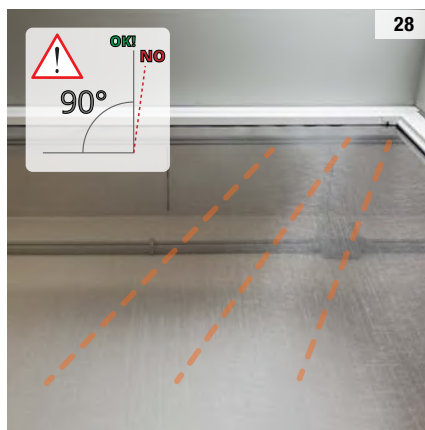
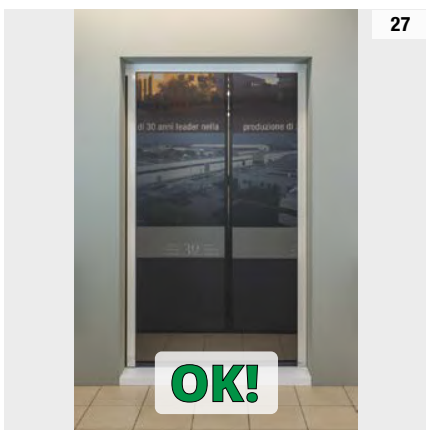
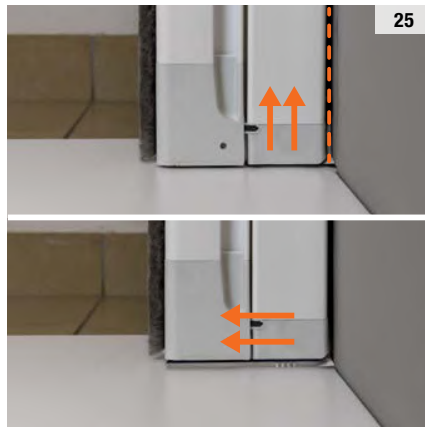
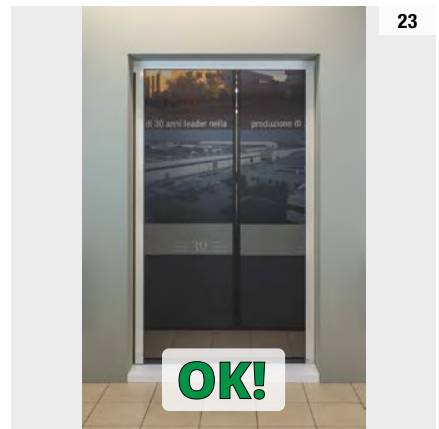
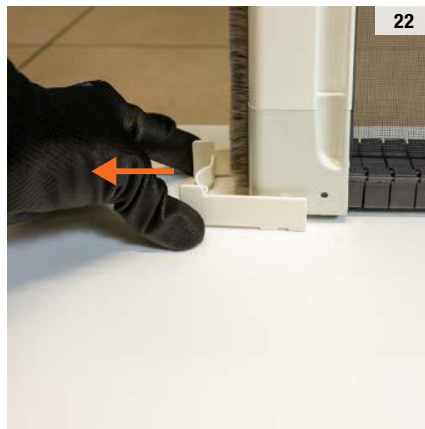
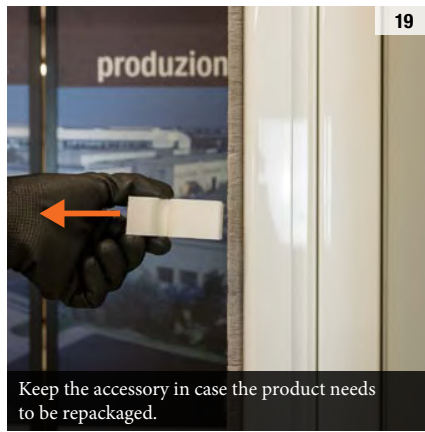
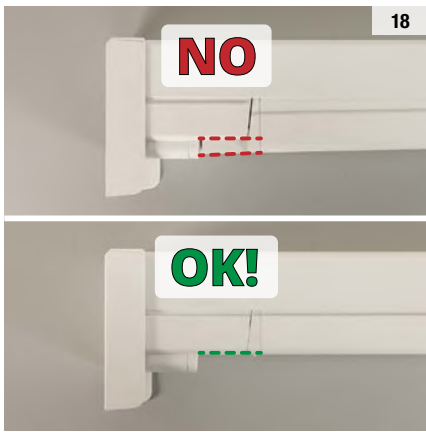
LEGEND

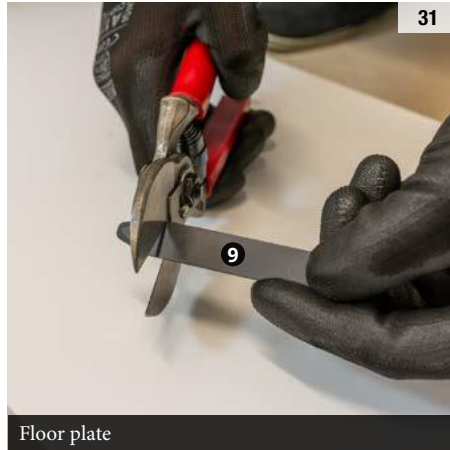
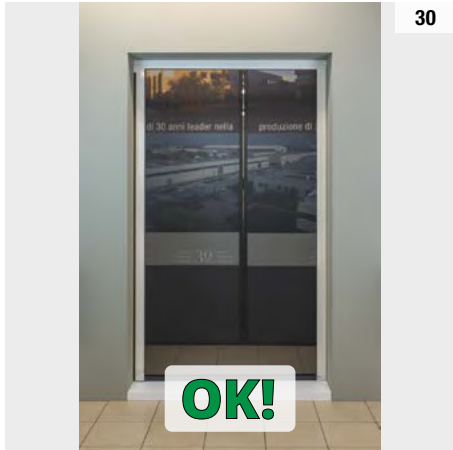


Installation and adjustment screws.

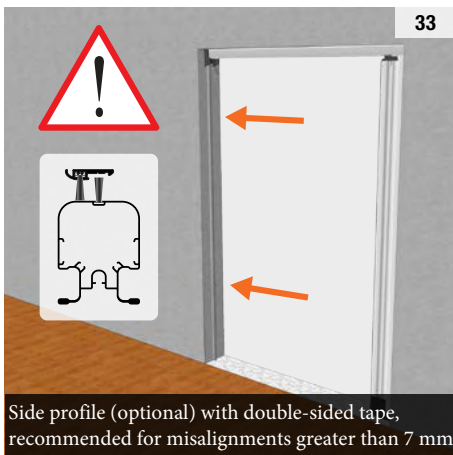




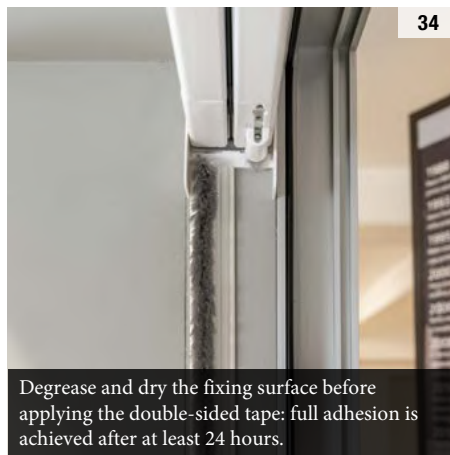




Degrease and dry the fixing surface before applying the double-sided tape: full adhesion is achieved after at least 24 hours.



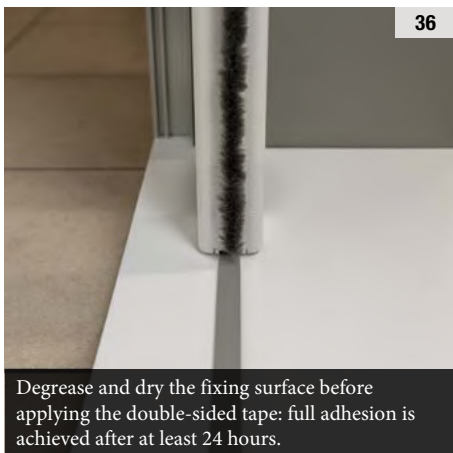
Side profile (optional) with double-sided tape, recommended for misalignments greater than 7 mm.



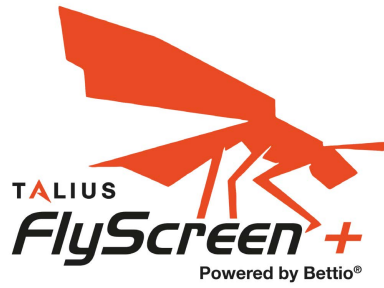
Degrease and dry the fixing surface before applying the double-sided tape: full adhesion is achieved after at least 24 hours.



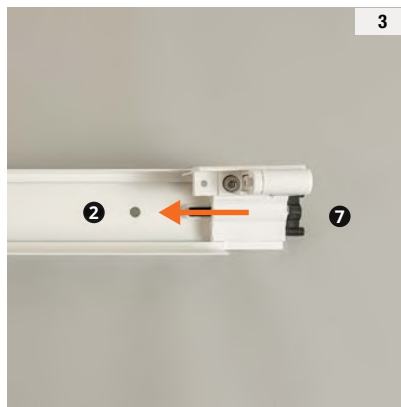
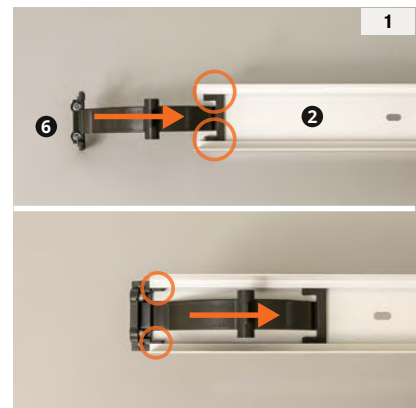
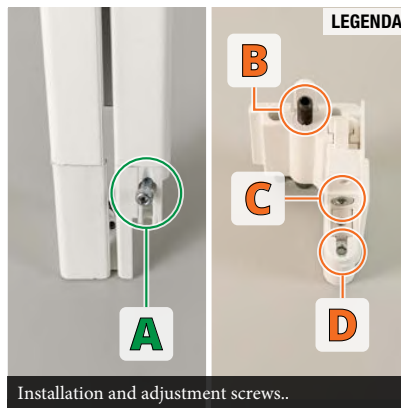
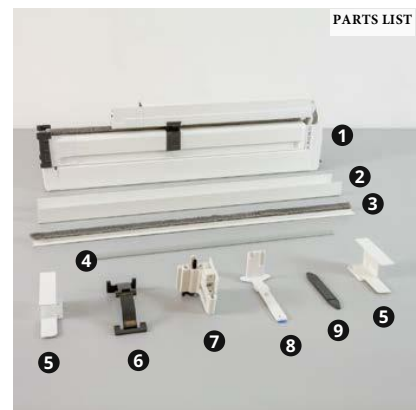
Sliding profile. Optional accessory. Installation at discretion.

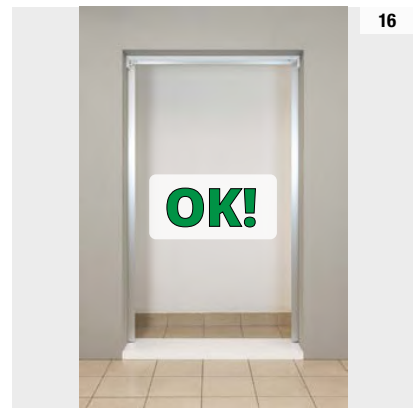
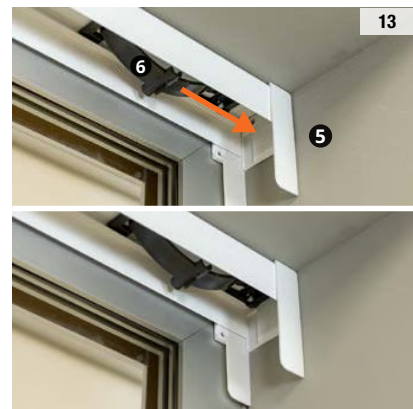
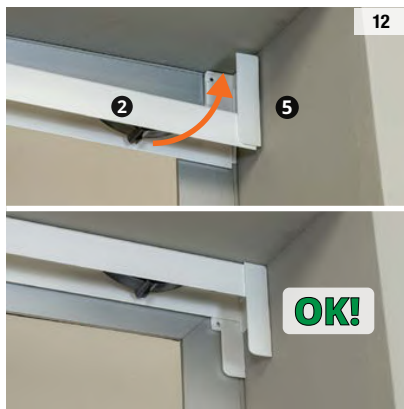
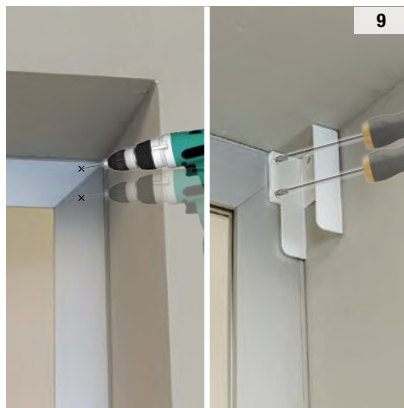
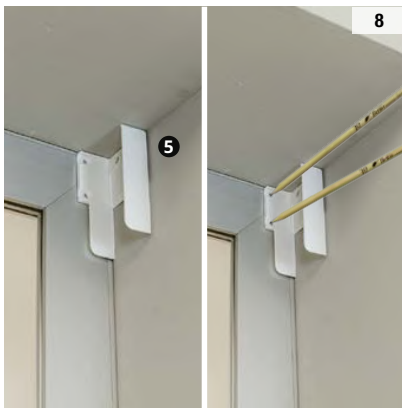
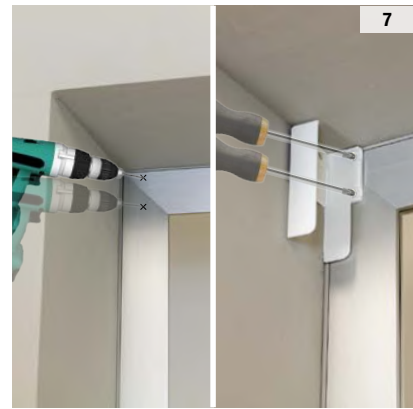
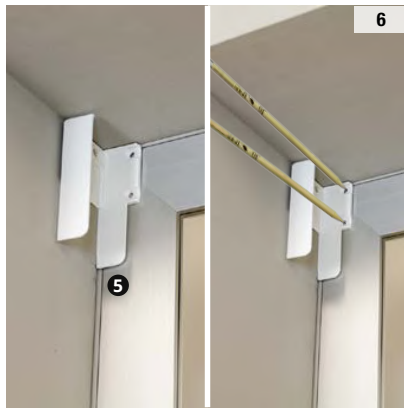


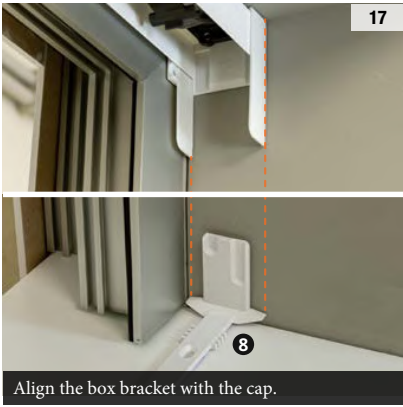
Degrease and dry the fixing surface before applying the double-sided tape: full adhesion is achieved after at least 24 hours.



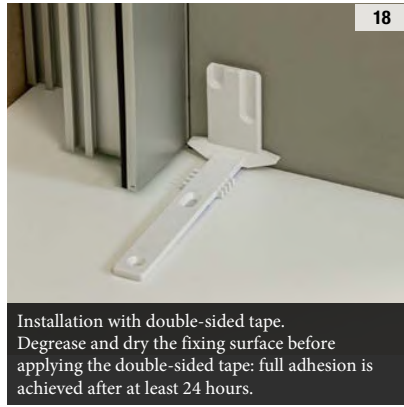
INSTALLATION INSTRUCTIONS METHOD 3 - 1 DOOR



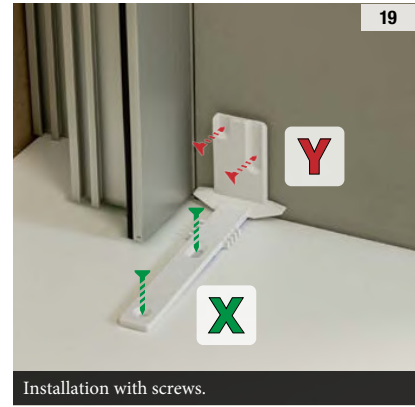




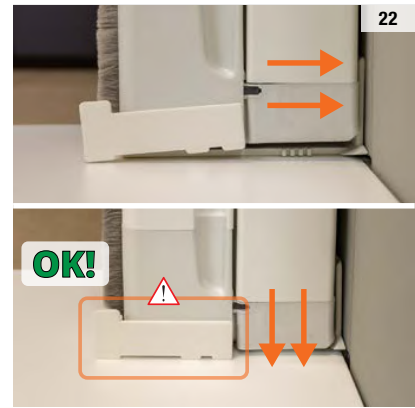
Align the box bracket with the cap.



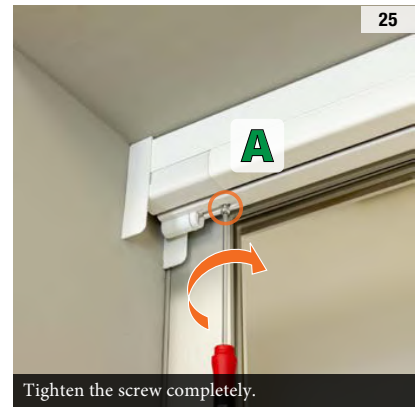
Installation with double-sided tape. Degrease and dry the fixing surface before applying the double-sided tape: full adhesion is achieved after at least 24 hours.



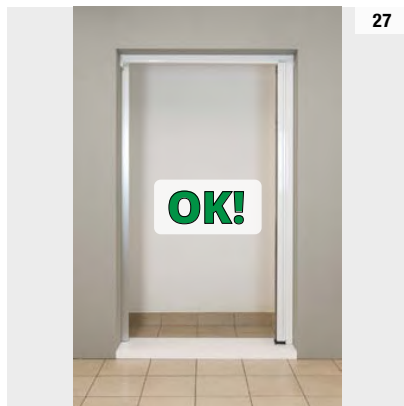
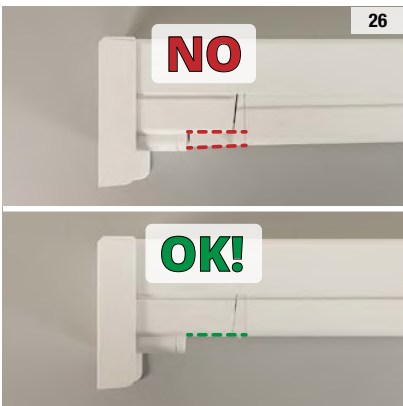
Installation with screws.



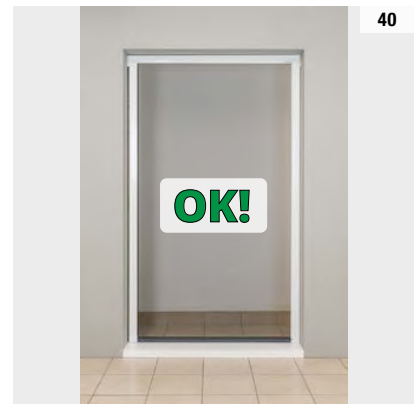
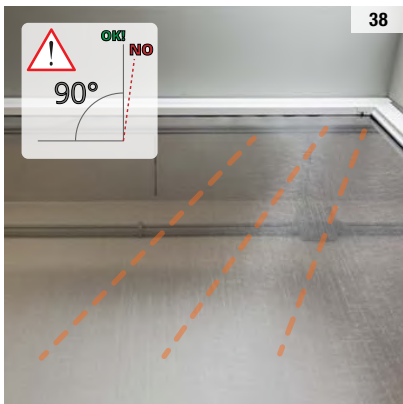
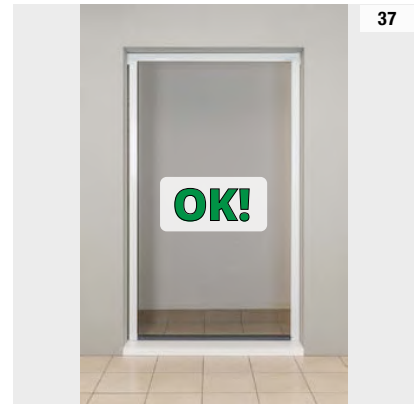
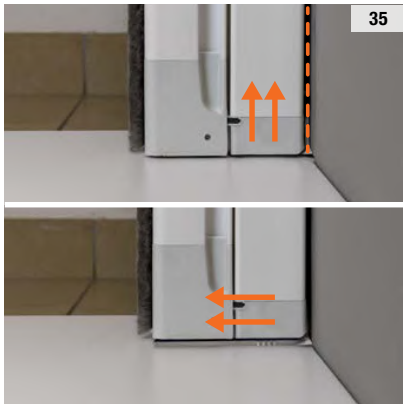
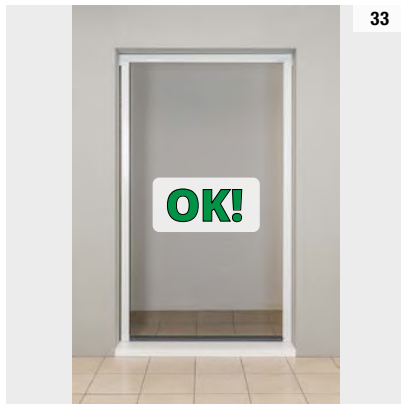
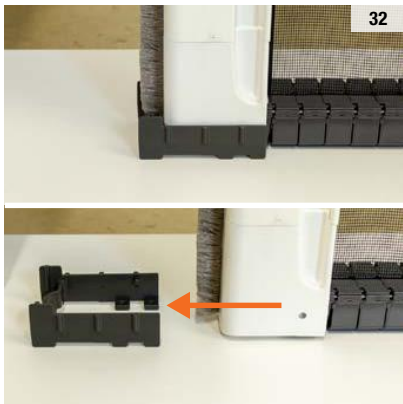
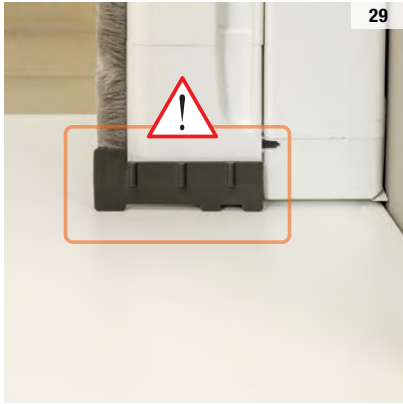
Lift guide the rail without forcing the movement.

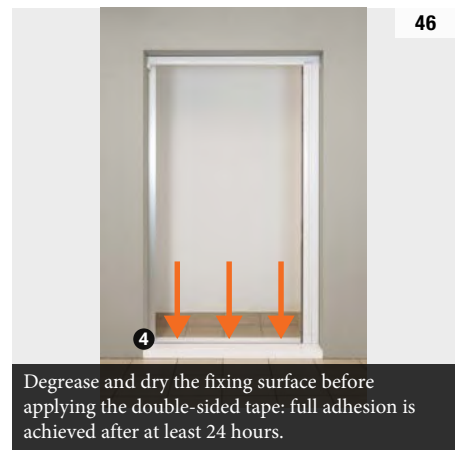
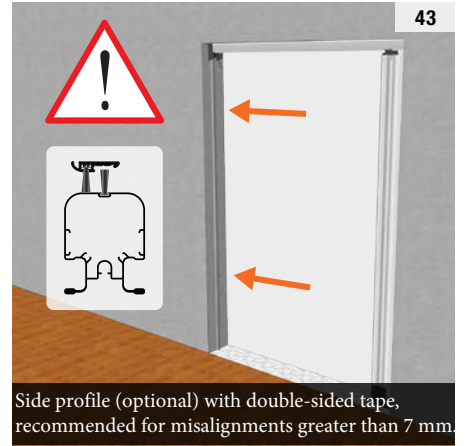


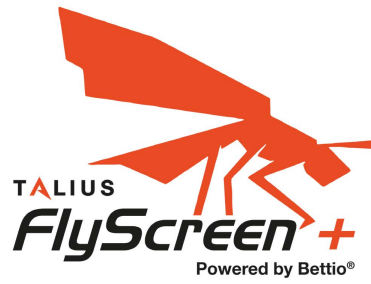
Tighten the screw completely.



Keep the accessory in case the product needs to be repackaged.

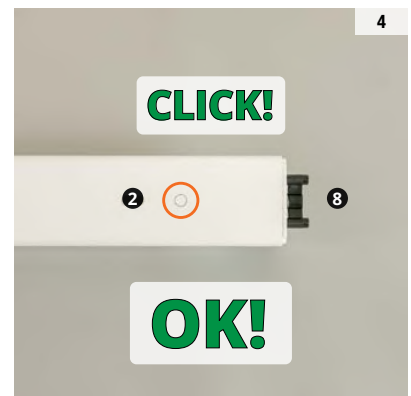
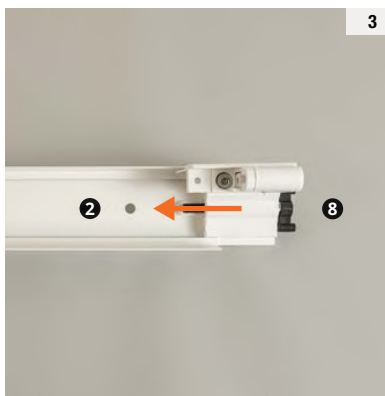
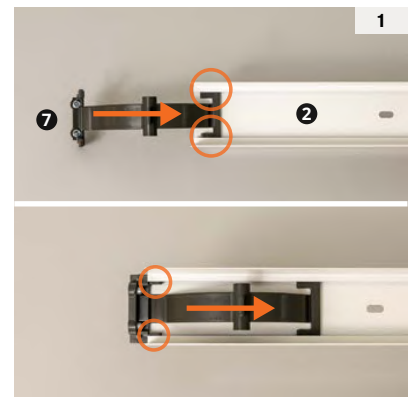
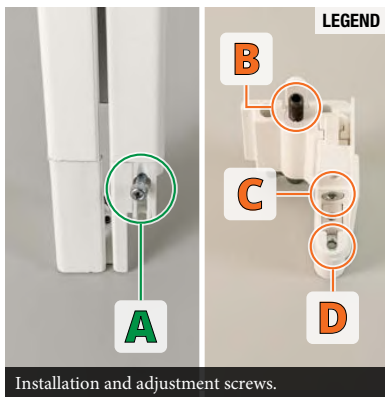
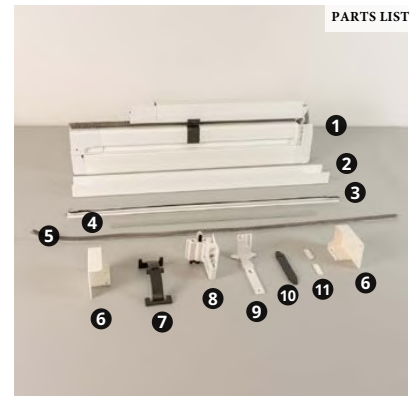


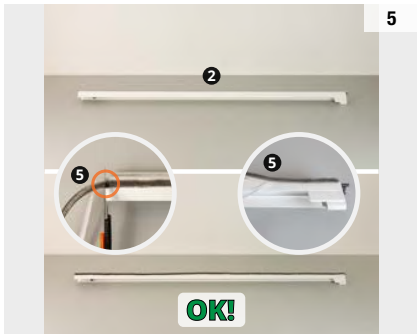




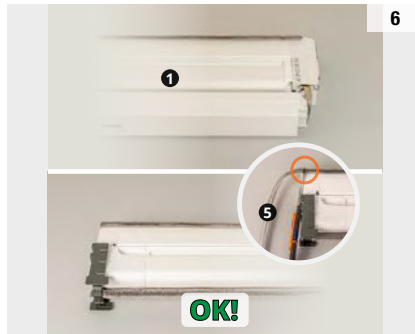
INSTALLATION INSTRUCTIONS

METHOD 4 - 1 DOOR

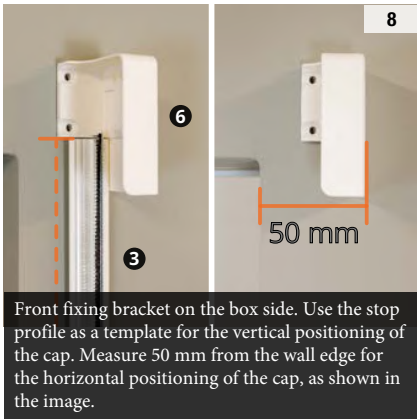




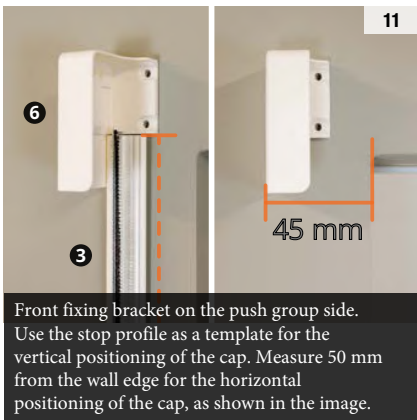
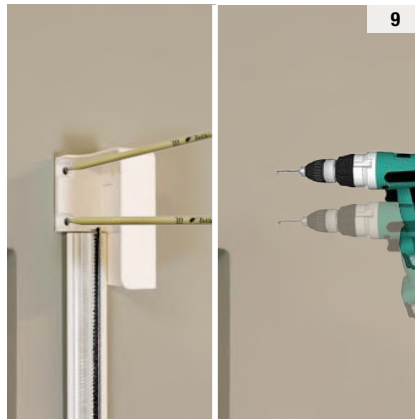
Degrease and dry the fixing surface before applying the double-sided tape: full adhesion is achieved after at least 24 hours.



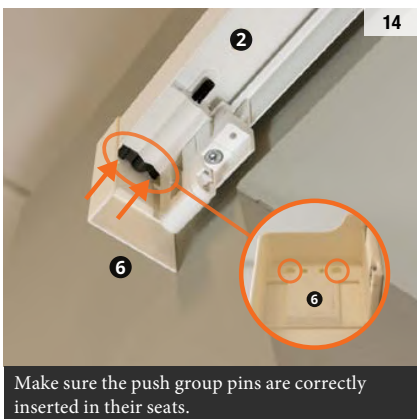
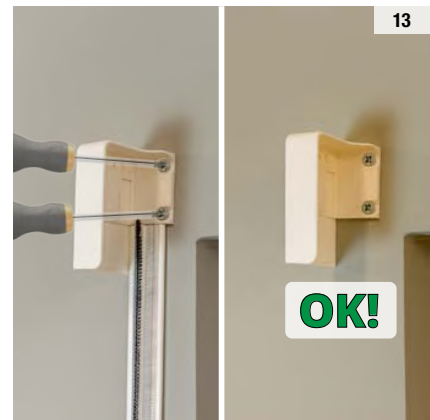
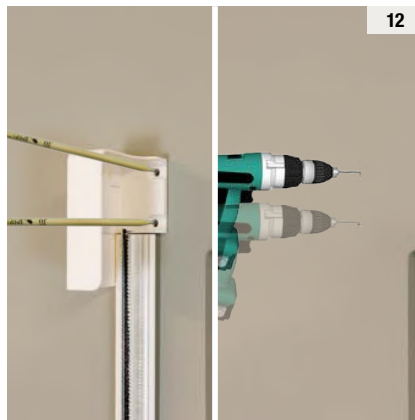
Degrease and dry the fixing surface before applying the double-sided tape: full adhesion is achieved after at least 24 hours.



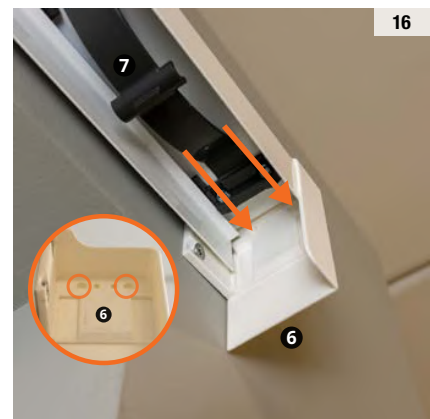
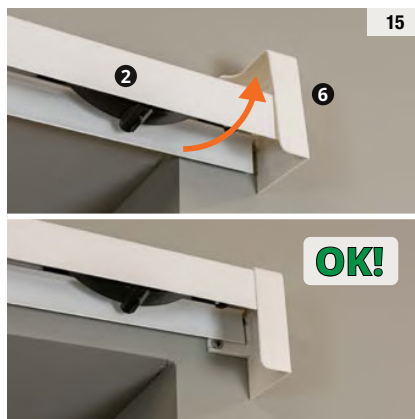
Front fixing bracket on the box side. Use the stop profile as a template for the vertical positioning of the cap. Measure 50 mm from the wall edge for the horizontal positioning of the cap, as shown in the image.



Front fixing bracket on the push group side. Use the stop profile as a template for the vertical positioning of the cap. Measure 50 mm from the wall edge for the horizontal positioning of the cap, as shown in the image.



Make sure the push group pins are correctly inserted in their seats.





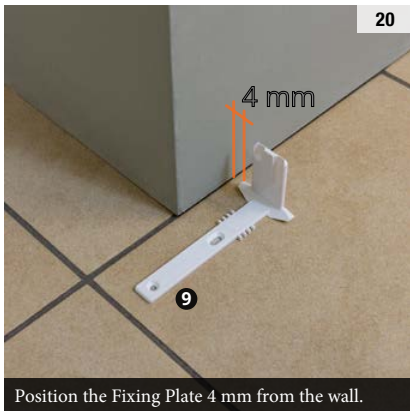
Tighten the set screws (HEX3) and make sure they are correctly inserted in their seats.



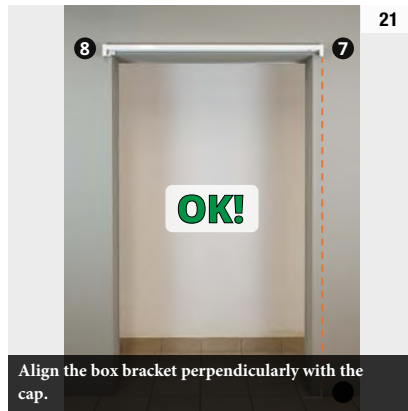
OK!



Put the push group under pressure.



Position the Fixing Plate 4 mm from the wall.



Align the box bracket perpendicularly with the cap.



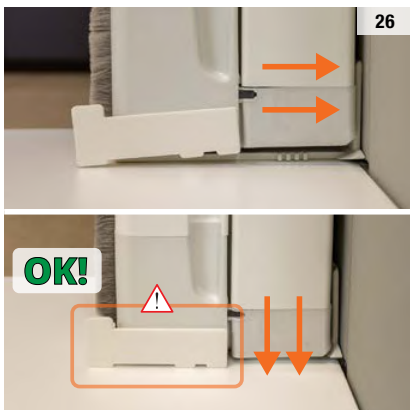
Installation with double-sided tape. Degrease and dry the fixing surface before applying the double-sided tape: full adhesion is achieved after at least 24 hours.



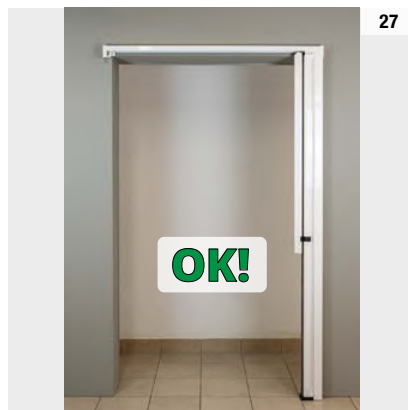
Installation with screws.



1



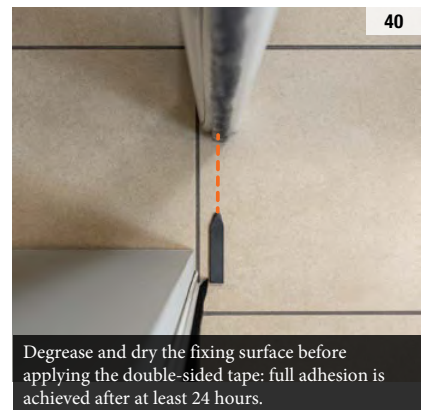
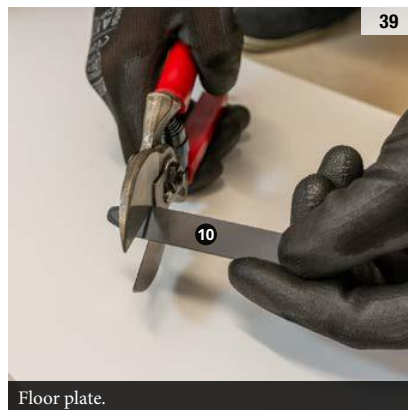
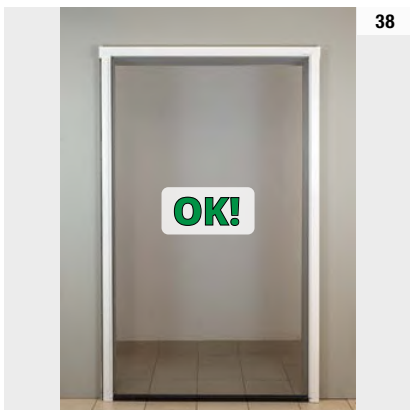
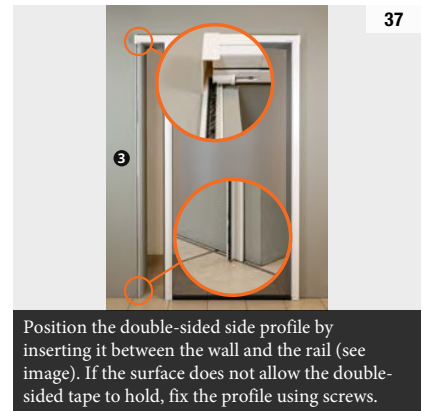
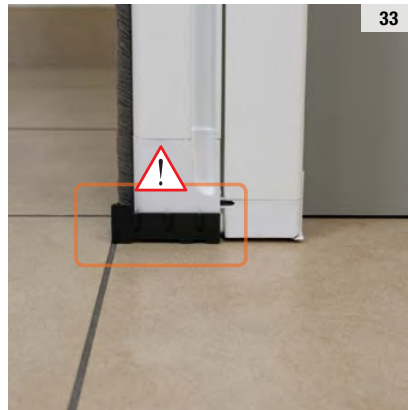
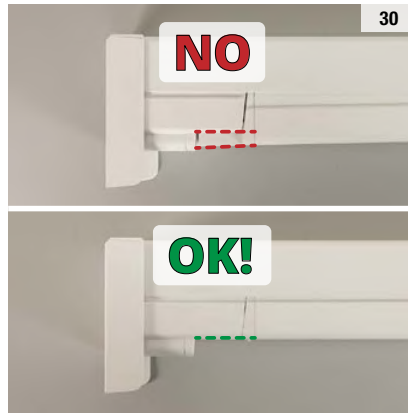
OK!

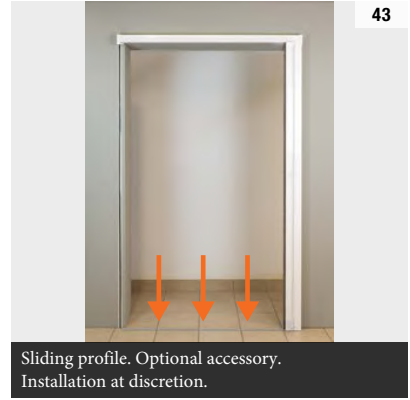


OK!

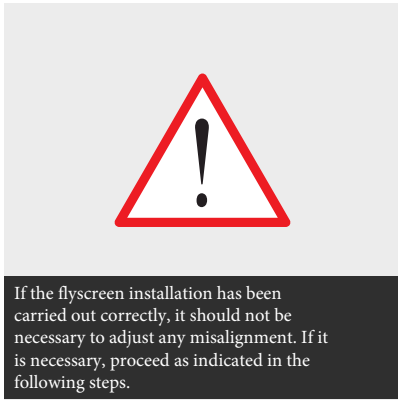


Lift guide rail without forcing the movement.

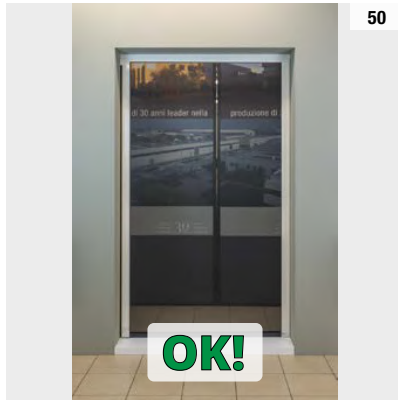
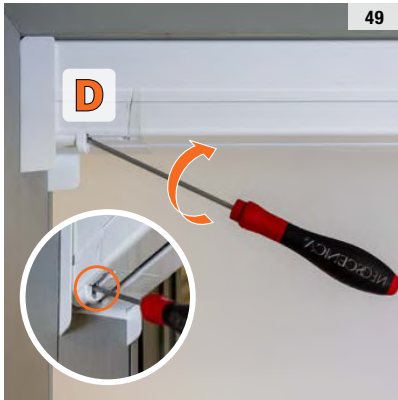
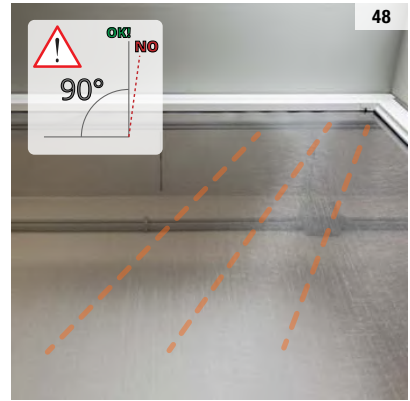
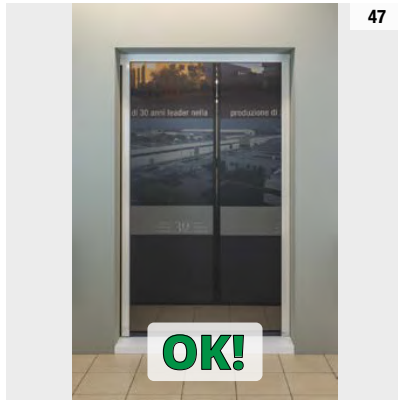
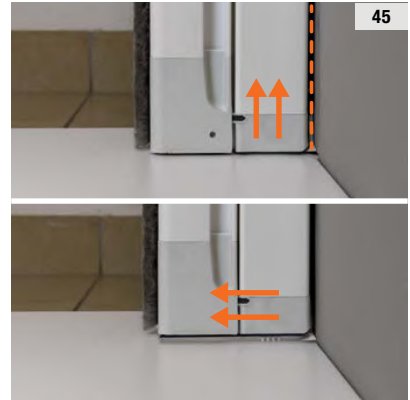


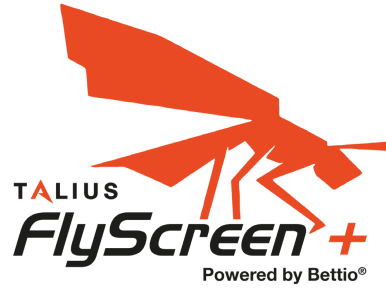


Sliding profile. Optional accessory.
Installation at discretion.



If the flyscreen installation has been carried out correctly, it should not be necessary to adjust any misalignment. If it is necessary, proceed as indicated in the following steps.

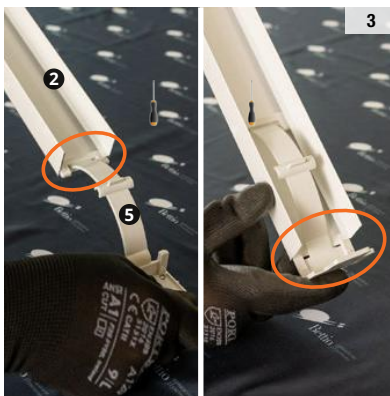
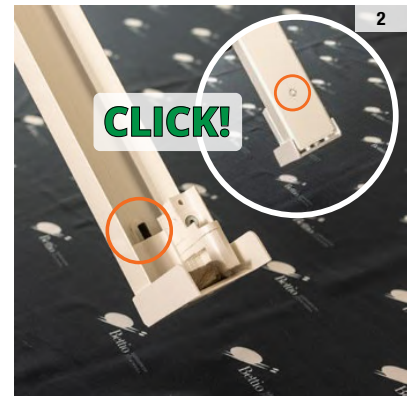
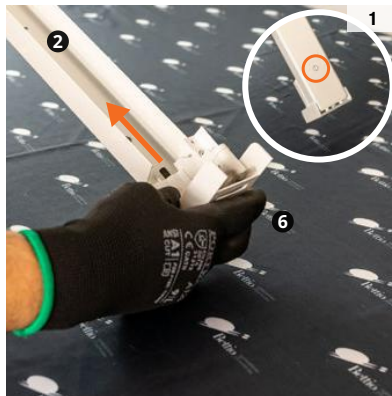
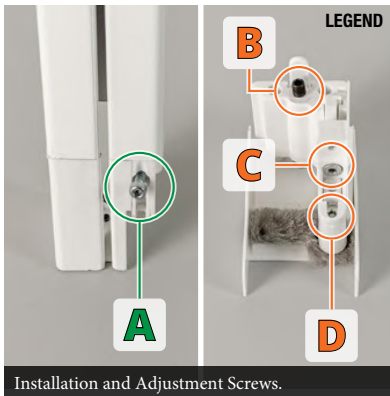
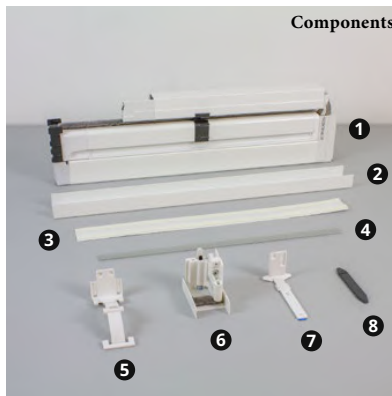


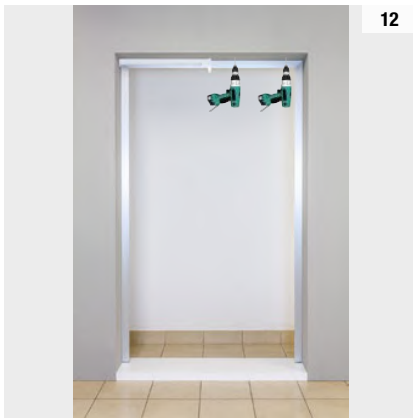


INSTALLATION INSTRUCTIONS METHOD 1 – 2 DOORS WITH SCREWS

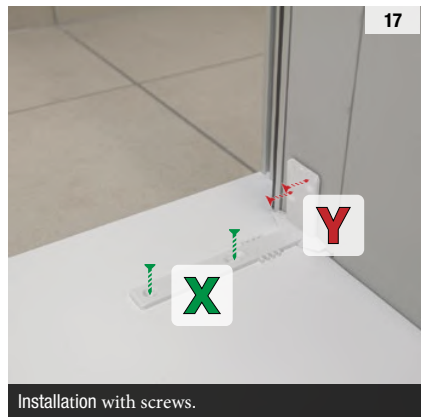
Components

- 1 Cassette
- 2 Adjuster Profile
- 3 Double Sided Tape
- 4 Sliding Profile (Optional)
- 5 Tension Spring
- 6 Push Assembly
- 7 Fixing Plate
- 8 Floor Plate

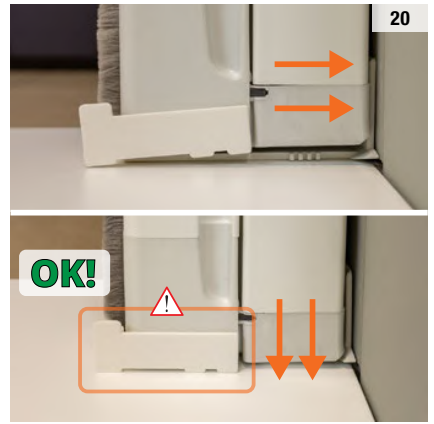
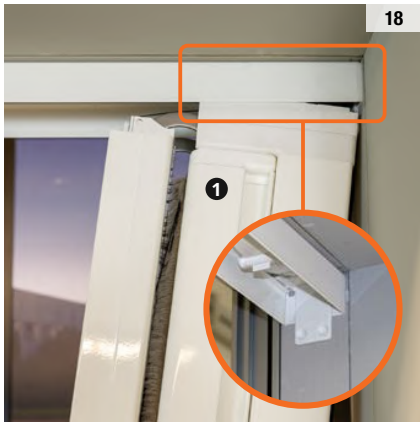




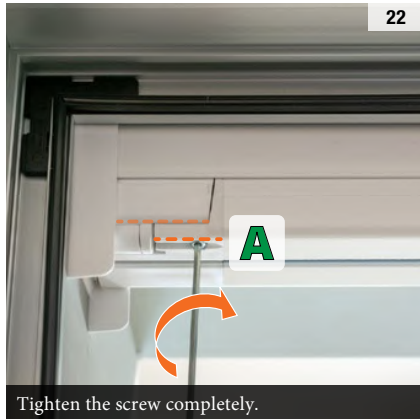
Installation with double-sided tape.
Degrease and dry the mounting surface before applying the double-sided tape: full adhesion is achieved after at least 24 hours.



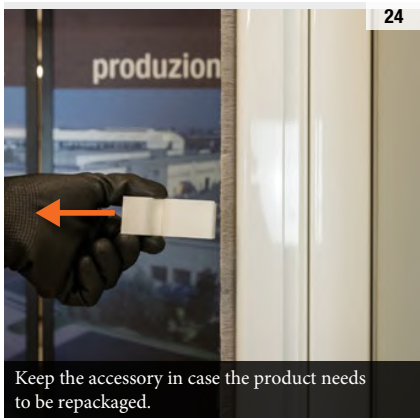
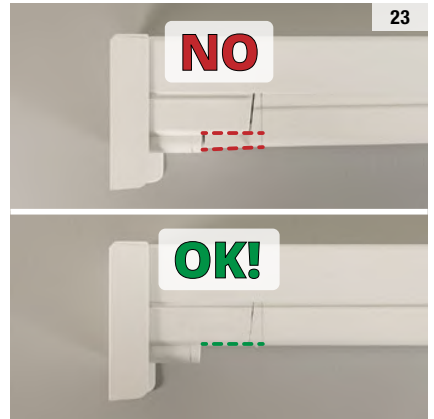
Installation with screws.



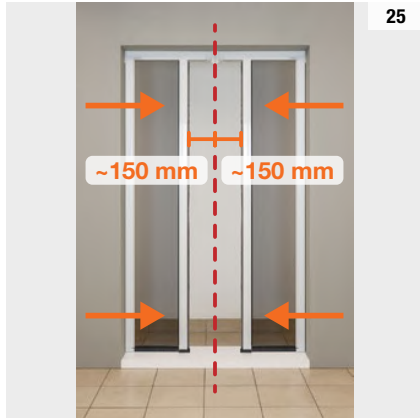
Lift the guide without forcing the movement.



Tighten the screw completely.

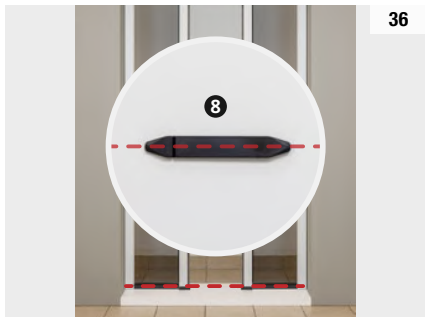
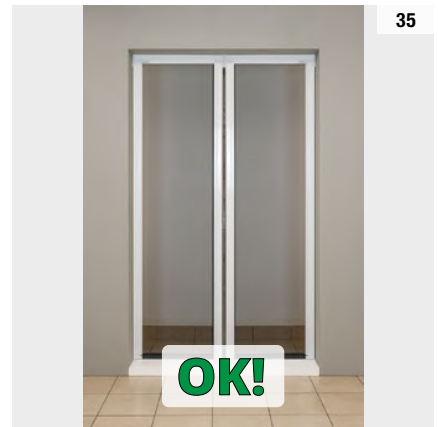
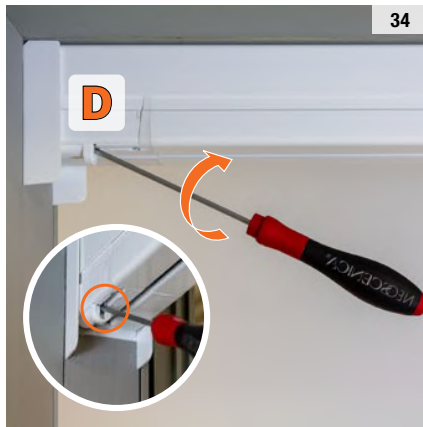
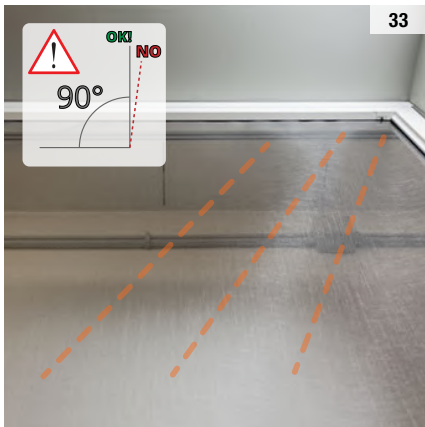
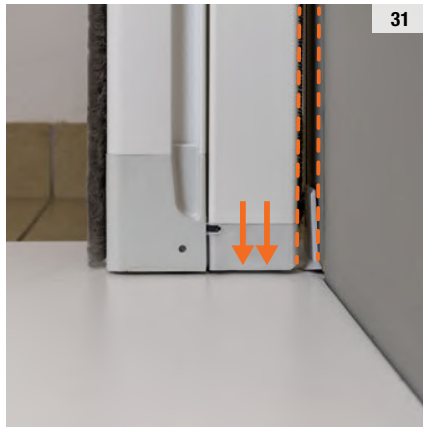
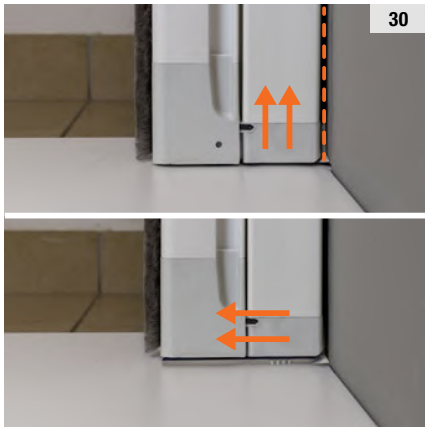


Keep the accessory in case the product needs to be repackaged.



Unscrew until the handle bar becomes slightly stiff when sliding.





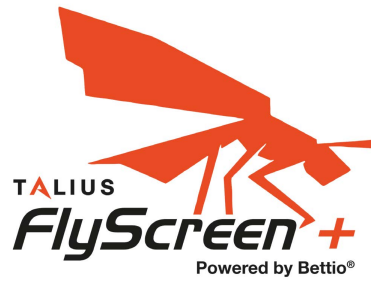
Floor tile.
Degrease and dry the mounting surface before applying the double-sided tape; full adhesion is achieved after at least 24 hours.



Sliding profile. Optional accessory. Installation is optional.



Sliding profile. Optional accessory. Installation is optional.

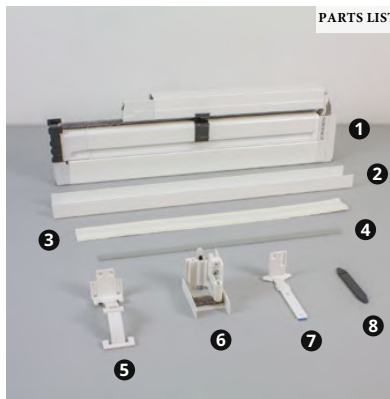


INSTALLATION INSTRUCTIONS METHOD 1 - 2 DOORS WITH TAPE

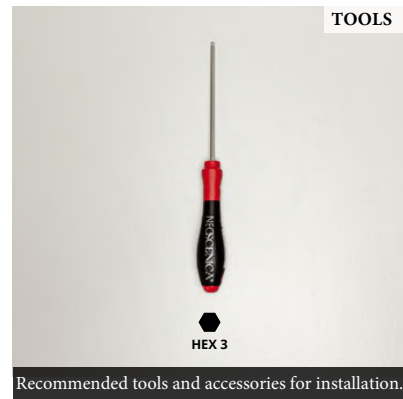
PARTS LIST

- 1 Fly screen
- 2 Adjuster profile (x2)
- 3 Double-sided tape for compensation profile
- 4 Sliding profile (opt)
- 5 Push spring (x2)
- 6 Push group (x2)
- 7 Fixing Plate (x2)
- 8 Floor plate

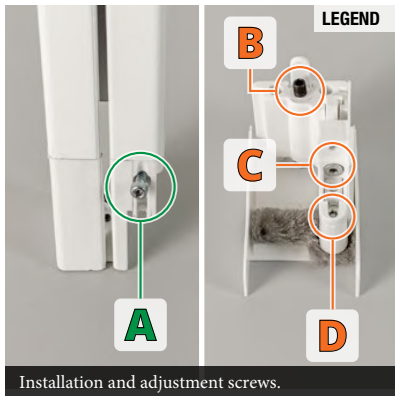
PARTS LIST



TOOLS



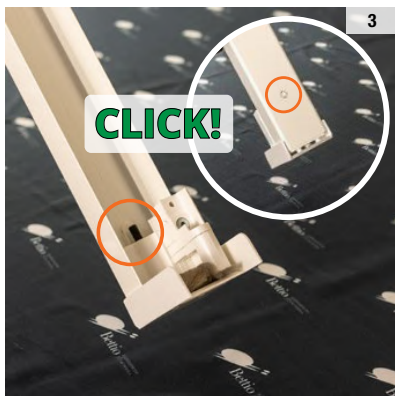
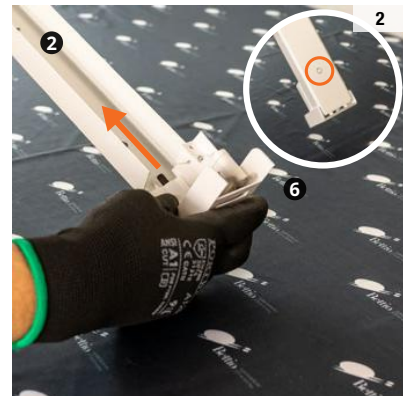
Recommended tools and accessories for installation.



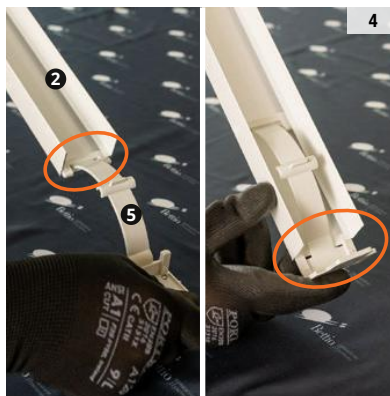
Installation and adjustment screws.



Degrease and dry the fixing surface before applying the double-sided tape: full adhesion is achieved after at least 24 hours.



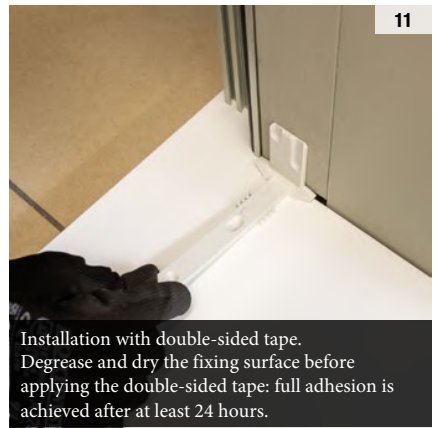
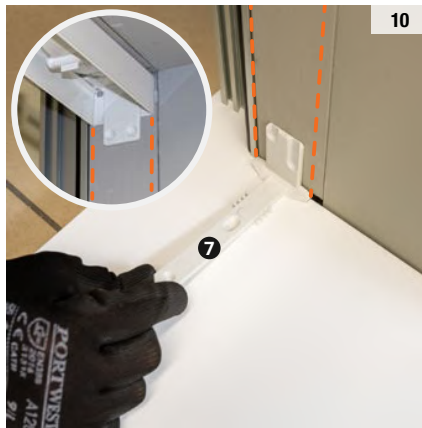
CLICK!



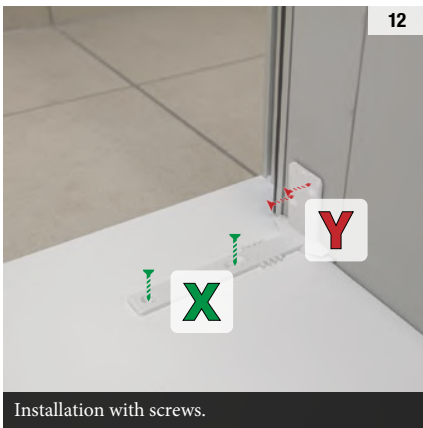
OK!



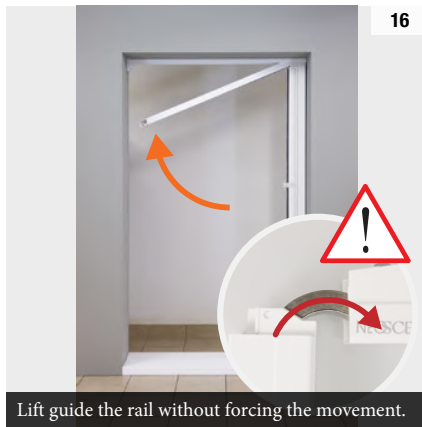
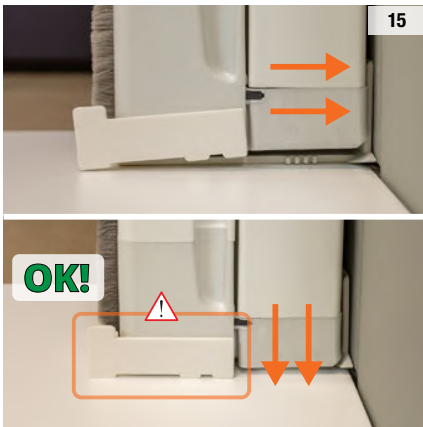
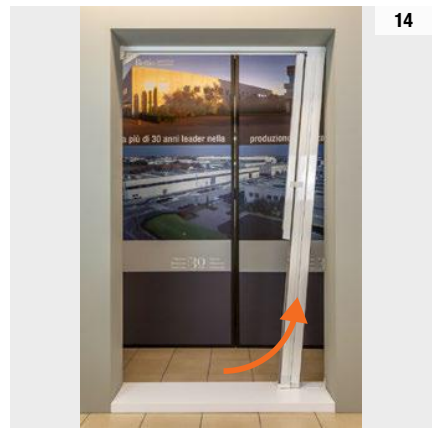
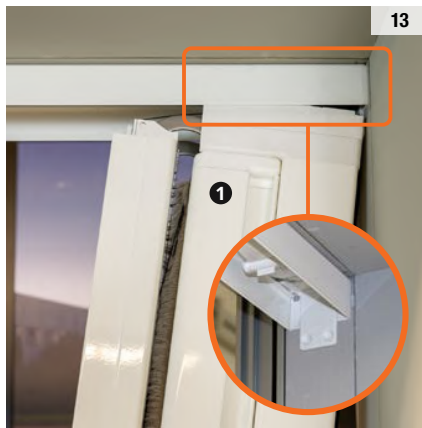
Degrease and dry the fixing surface before applying the double-sided tape: full adhesion is achieved after at least 24 hours.



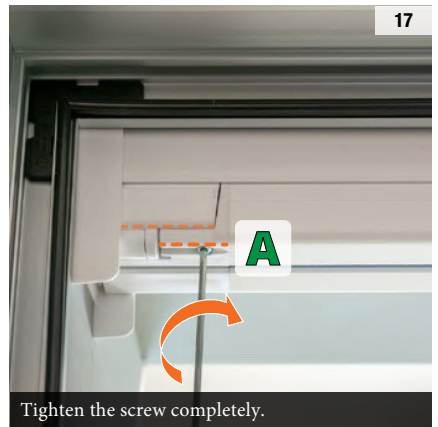
Installation with double-sided tape. Degrease and dry the fixing surface before applying the double-sided tape: full adhesion is achieved after at least 24 hours.



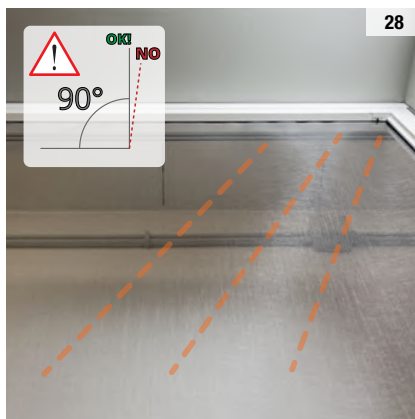
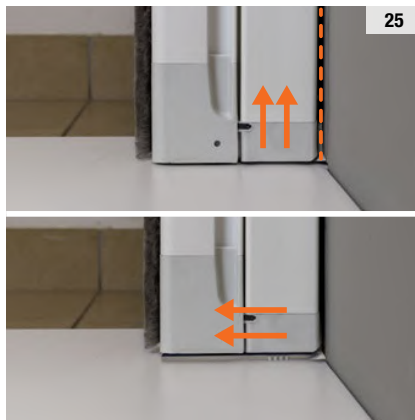
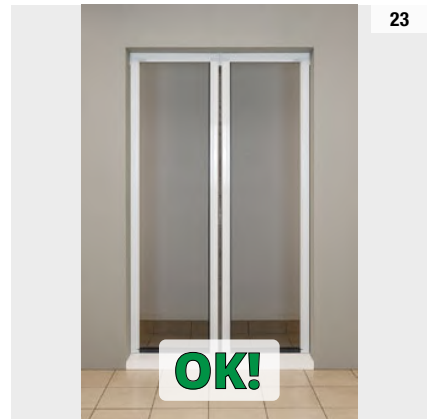
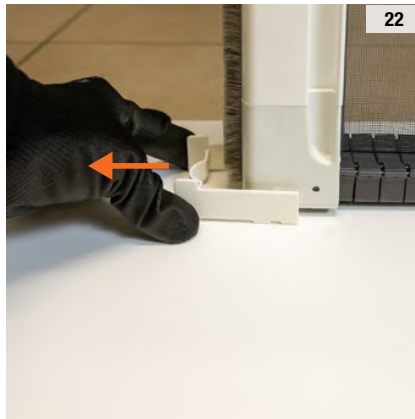
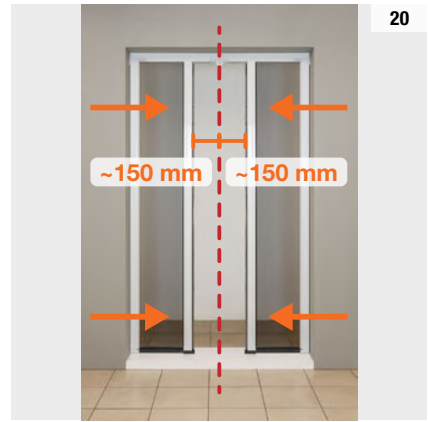
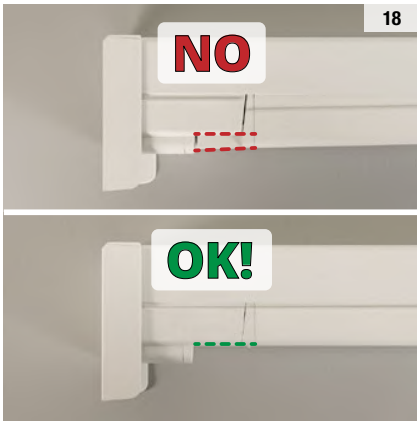
Installation with screws.

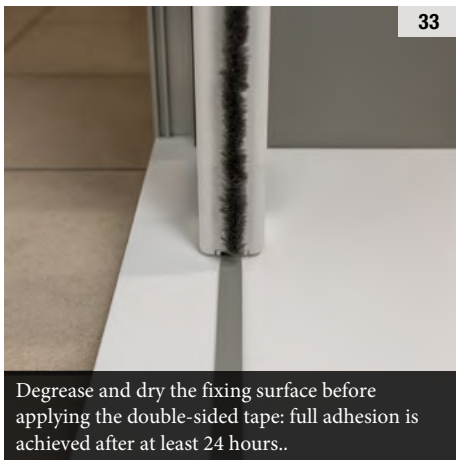
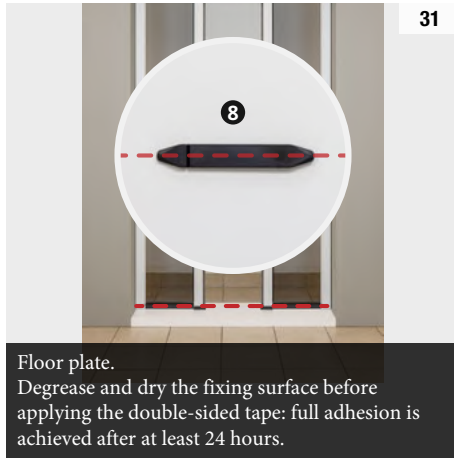
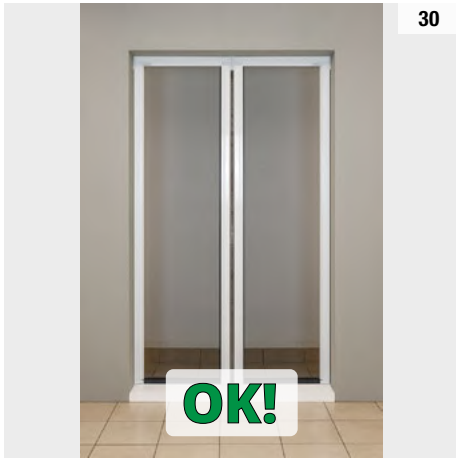


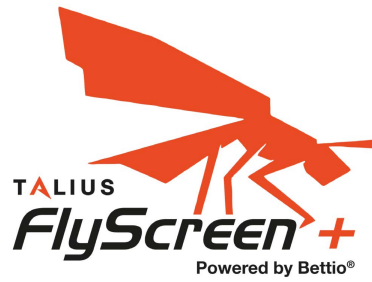
Lift guide the rail without forcing the movement.



Tighten the screw completely.





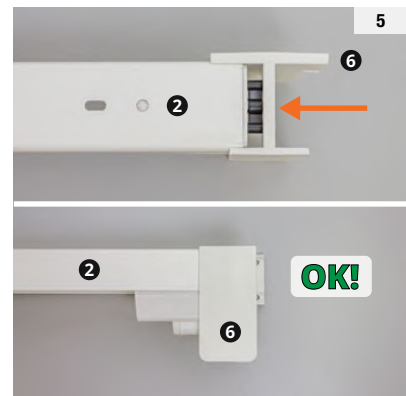
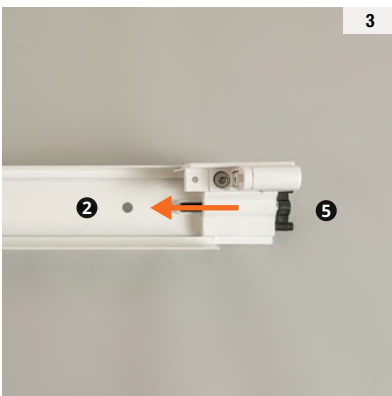
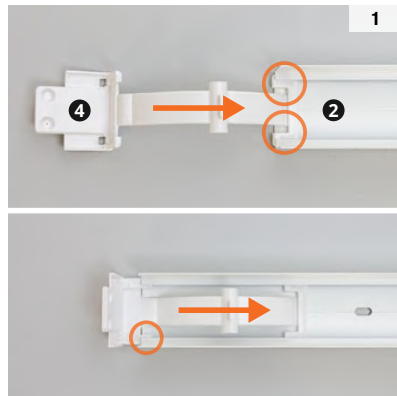
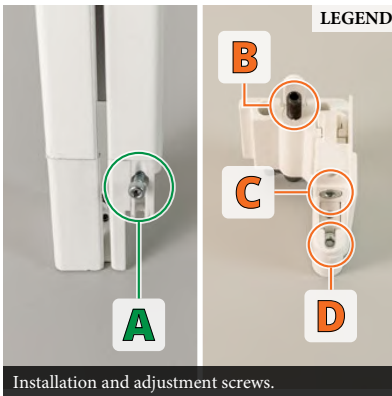
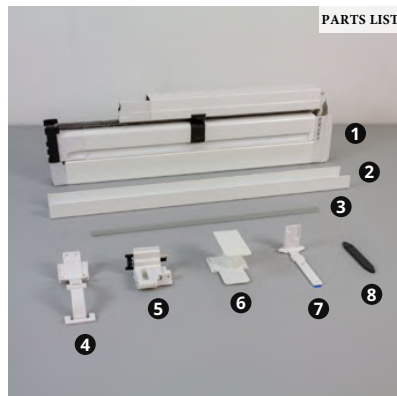


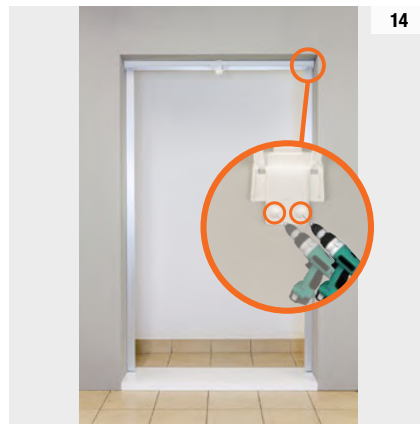
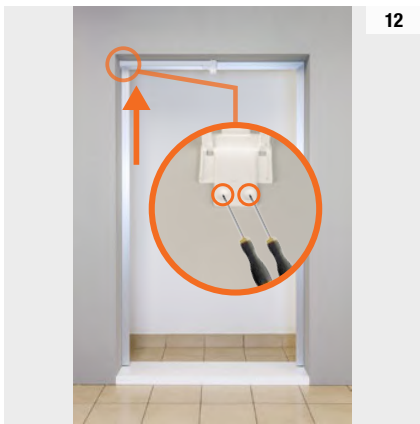
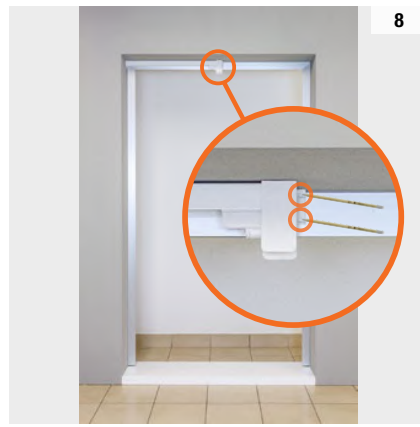
INSTALLATION INSTRUCTIONS

METHOD 2 – 2 DOORS WITH SCREWS

PARTS LIST

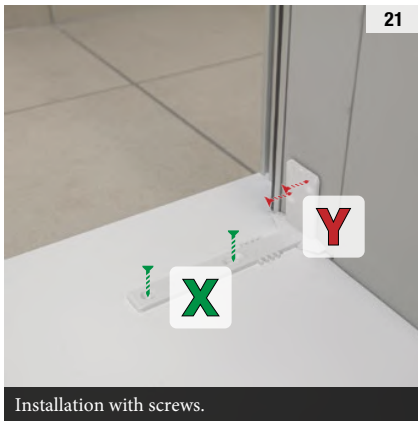
- 1 Fly screen
- 2 Compensation profile (x2)
- 3 Sliding profile (optional)
- 4 Push spring (x2)
- 5 Push group (x2)
- 6 Double door cap
- 7 Fixing Plate (x2)
- 8 Floor plate



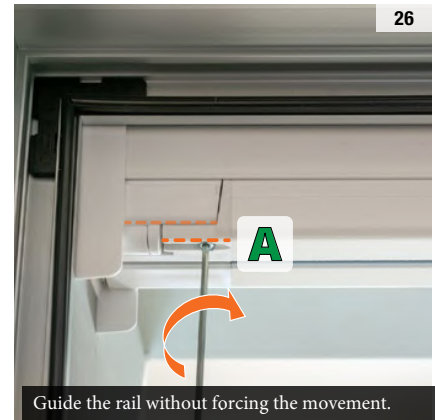
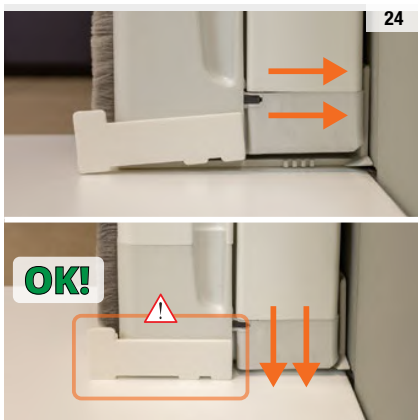
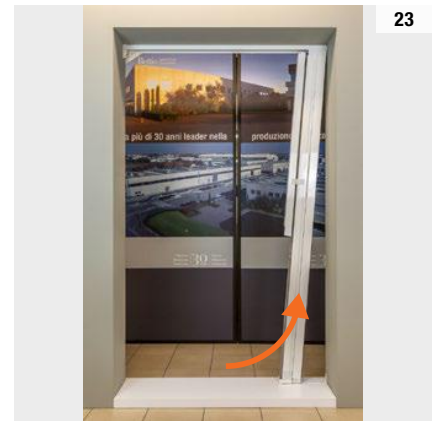
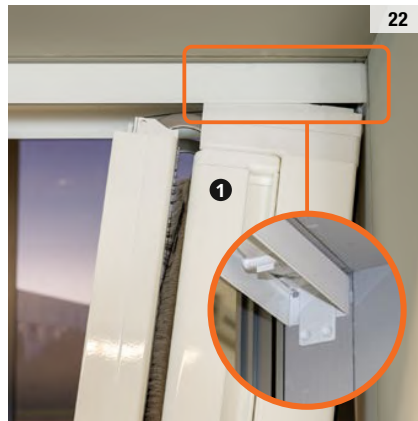




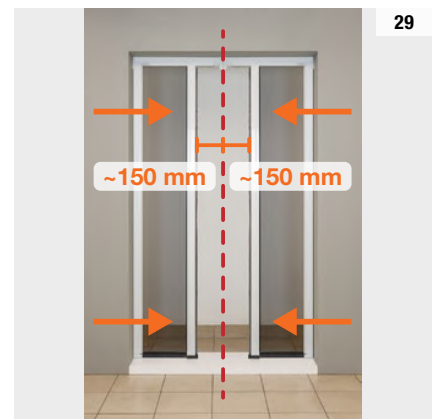
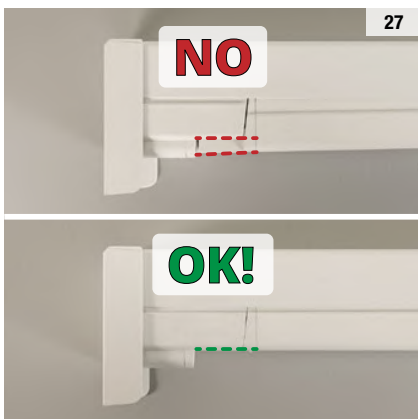
Installation with double-sided tape.
Degrease and dry the fixing surface before applying the double-sided tape: full adhesion is achieved after at least 24 hours

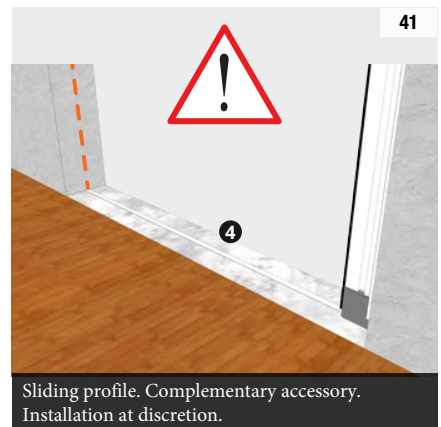
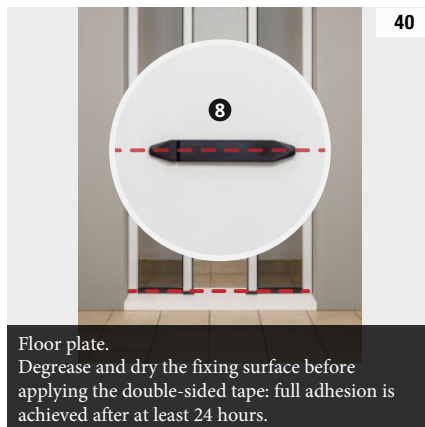
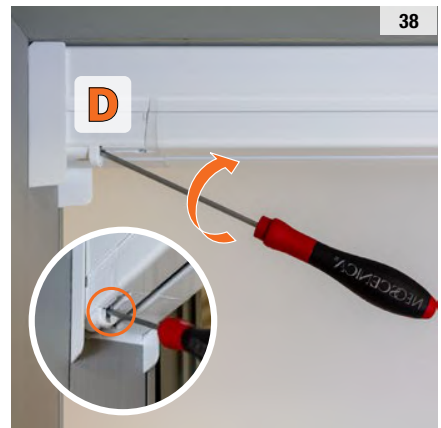
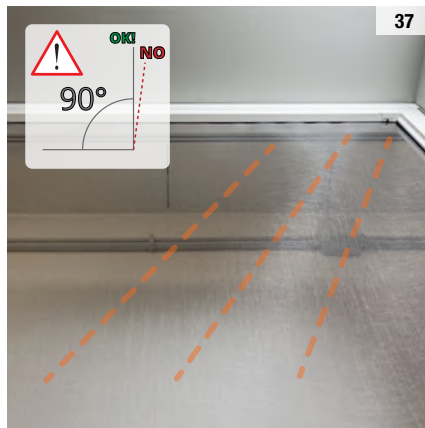
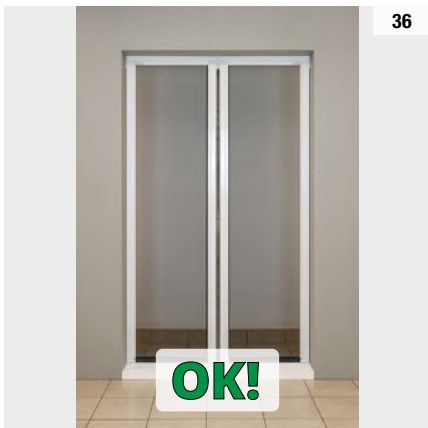
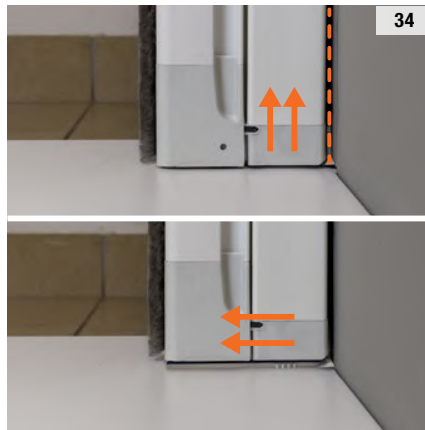
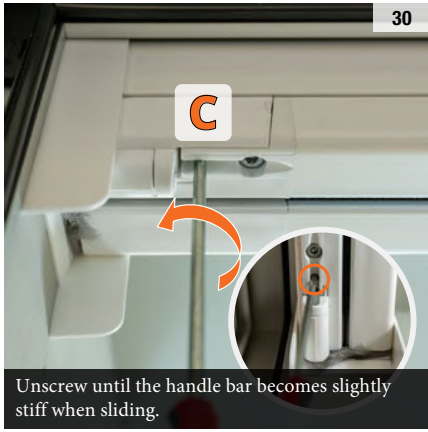


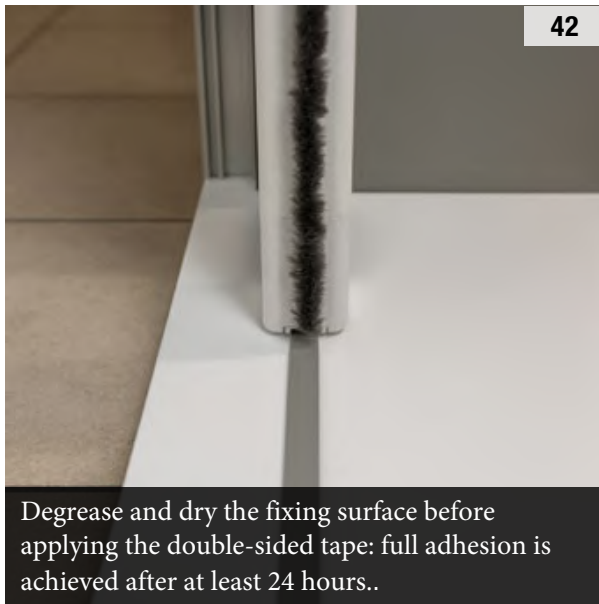
Installation with screws.

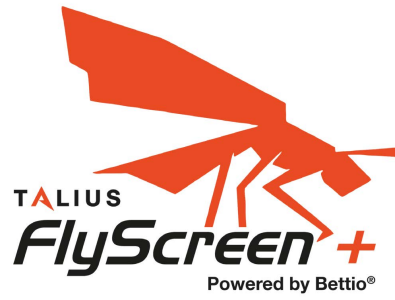


Guide the rail without forcing the movement.

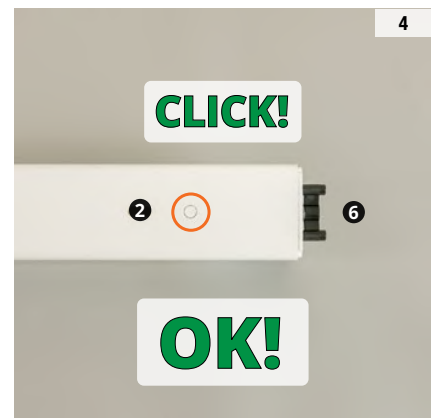
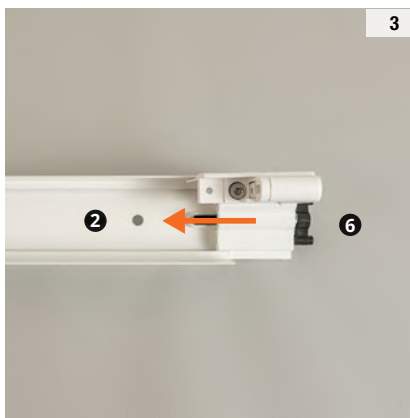
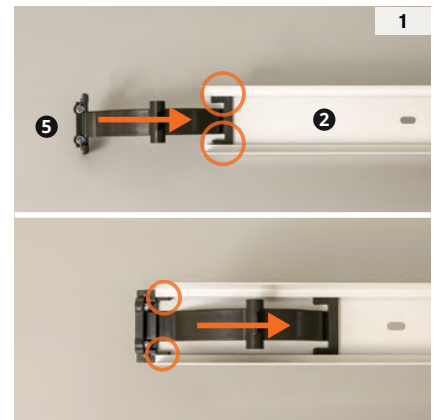
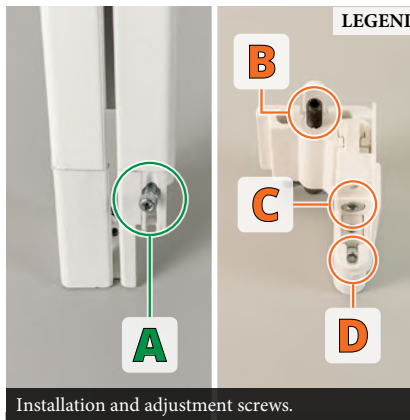
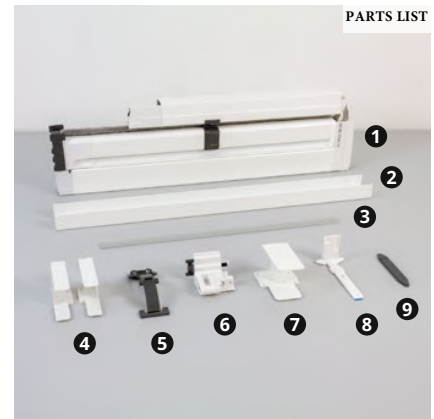
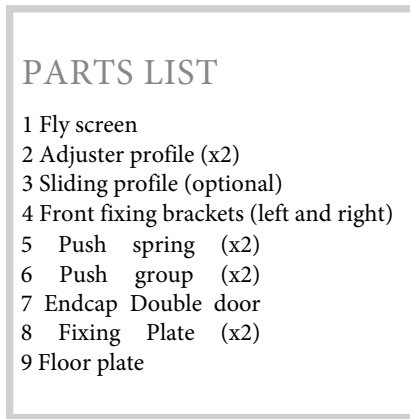
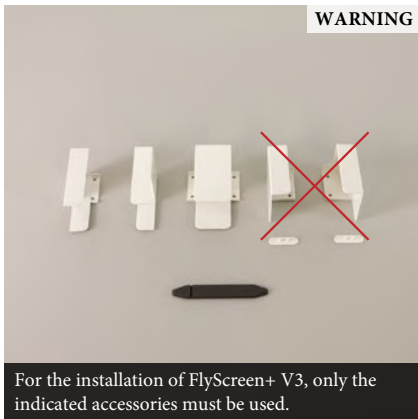


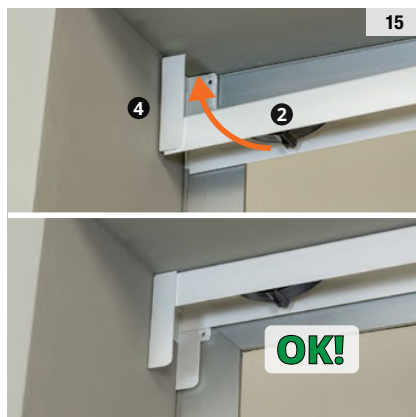
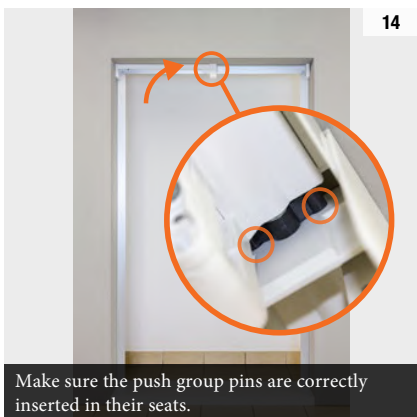
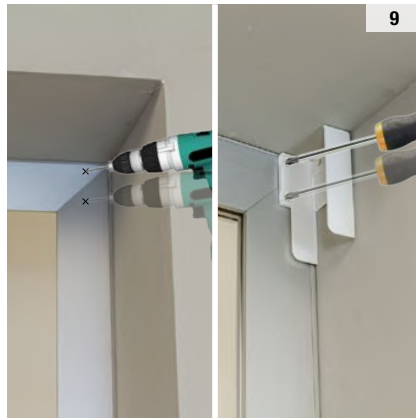
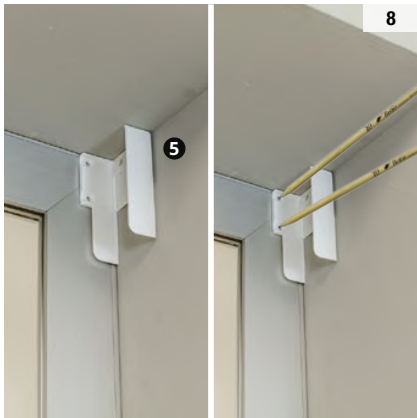
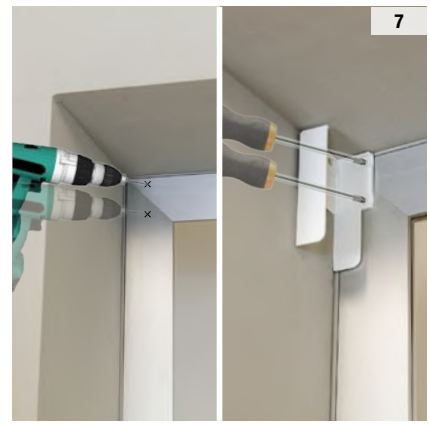
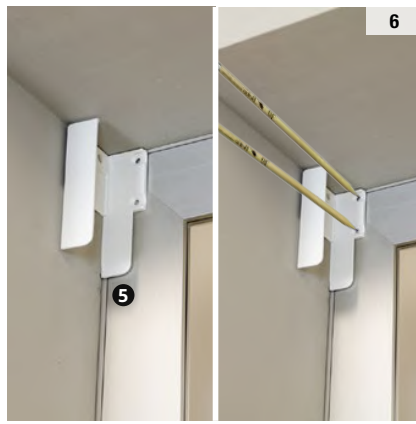




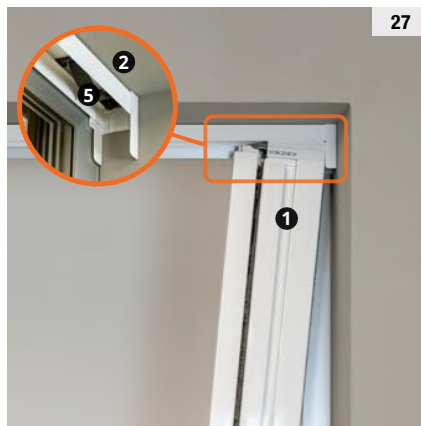
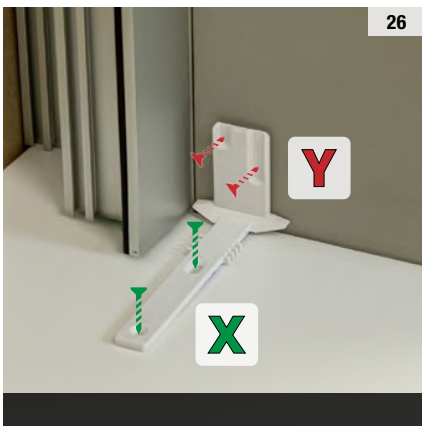
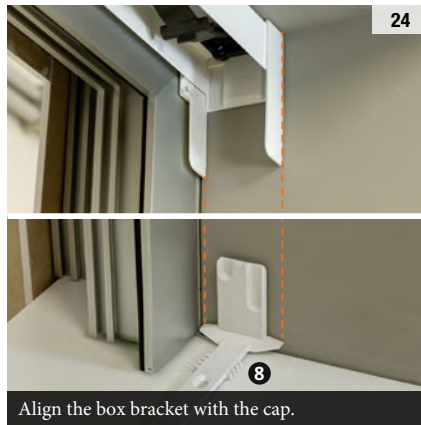
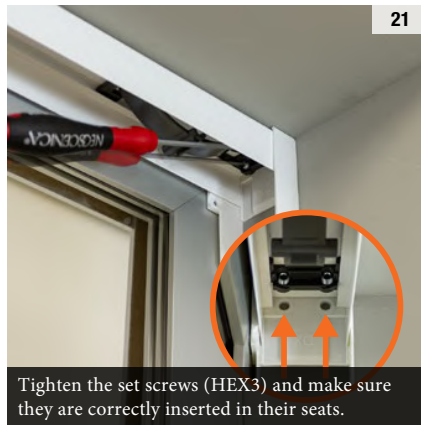
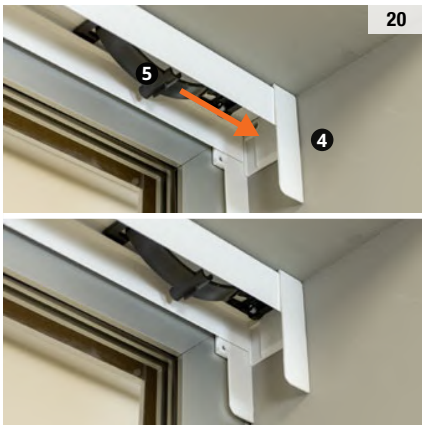
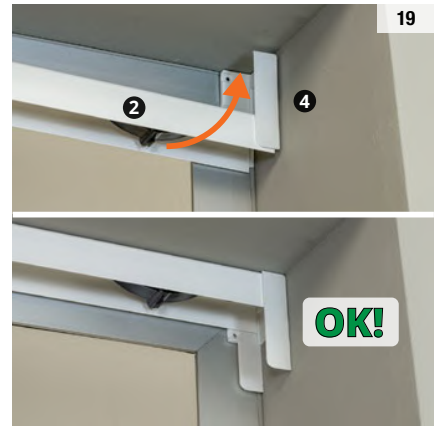
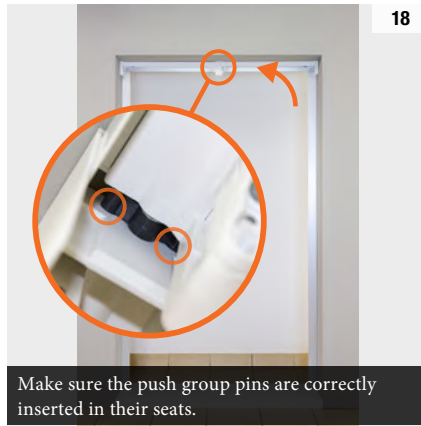


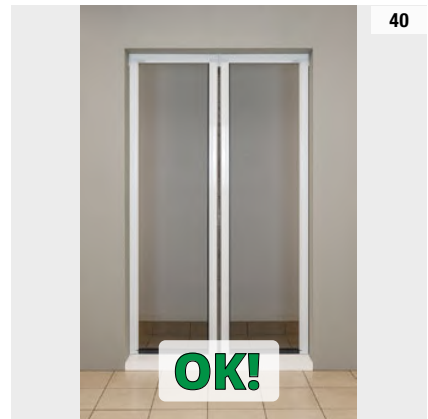
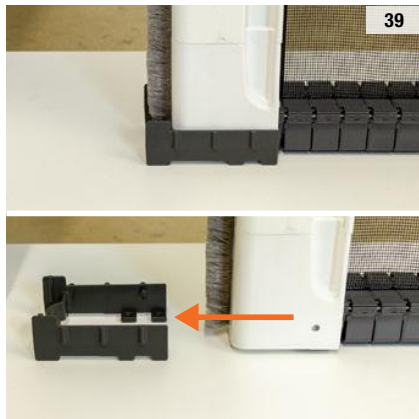
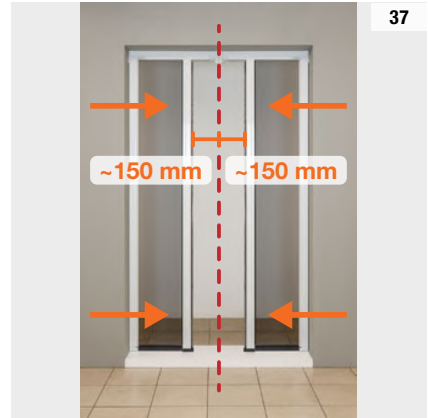
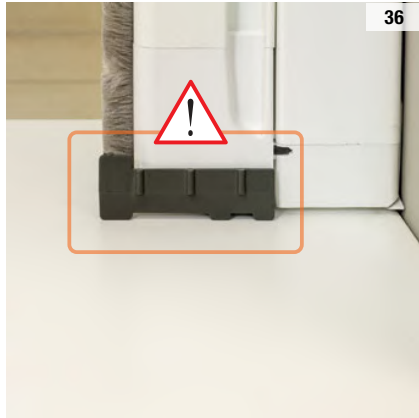
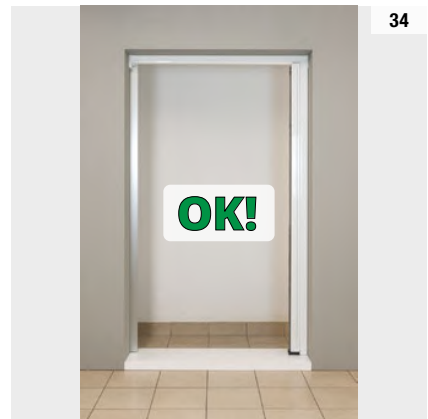
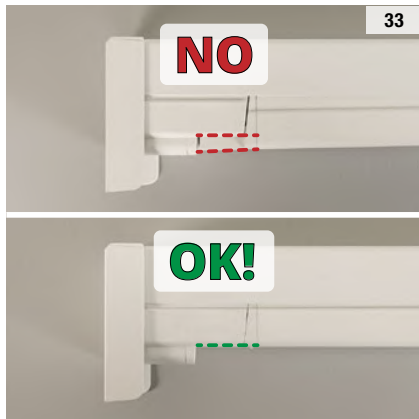
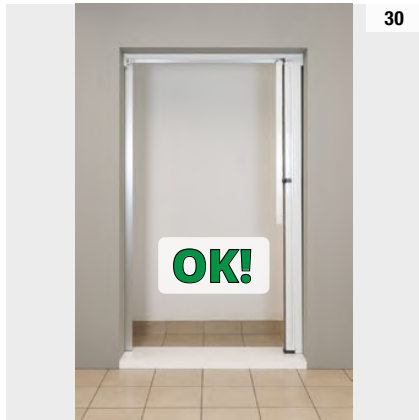
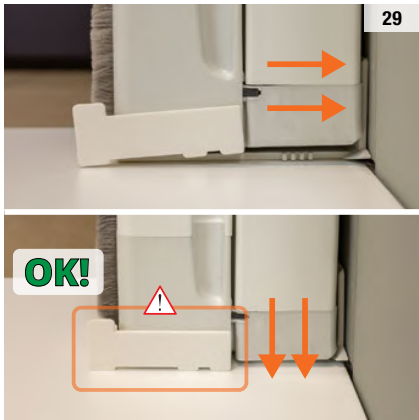
INSTALLATION INSTRUCTIONS METHOD 3 – 2 DOORS

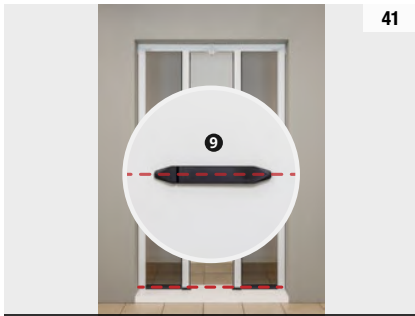




Make sure the push group pins are correctly inserted in their seats.







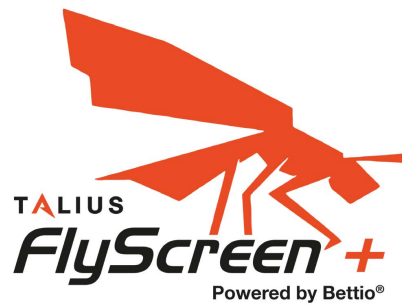
Floor plate.
Degrease and dry the fixing surface before applying the double-sided tape: full adhesion is achieved after at least 24 hours.



Sliding profile. Optional accessory.
Installation at discretion.

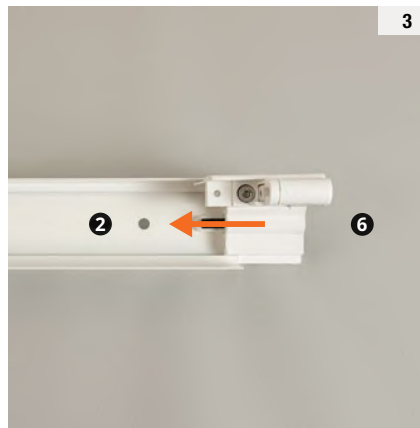
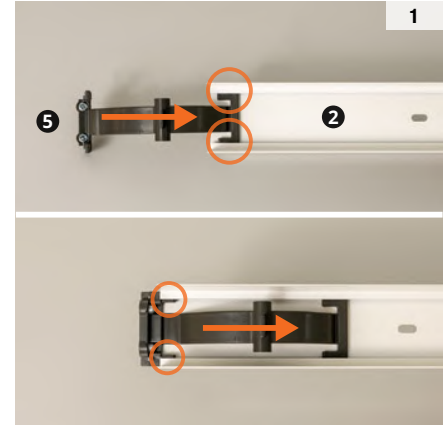
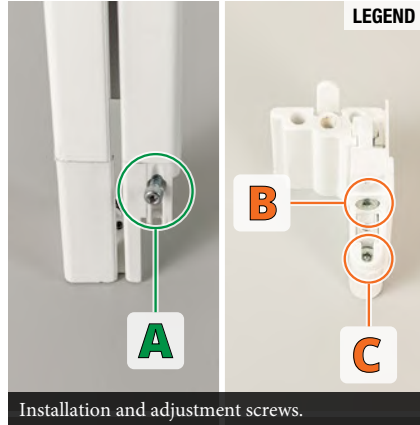
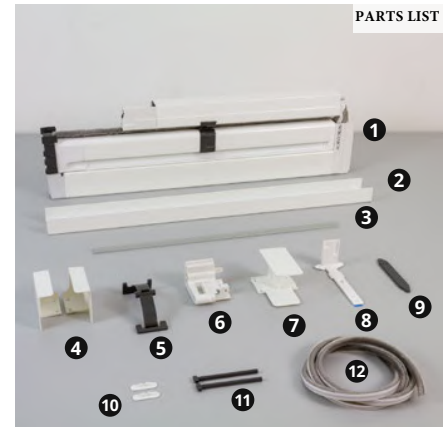


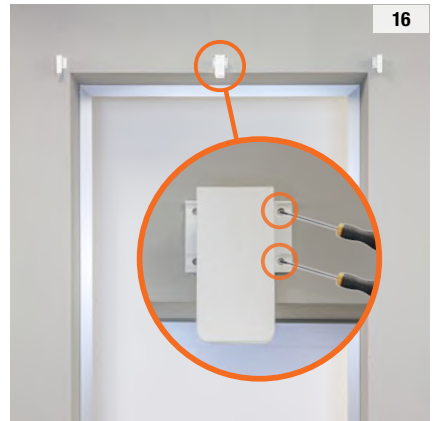
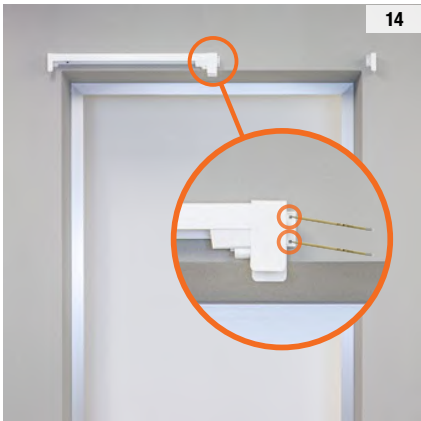
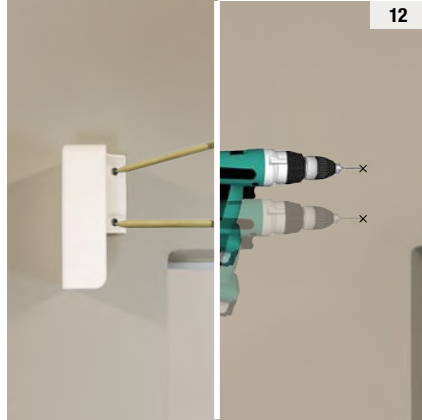
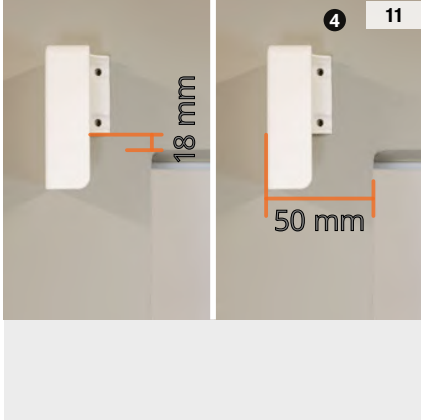
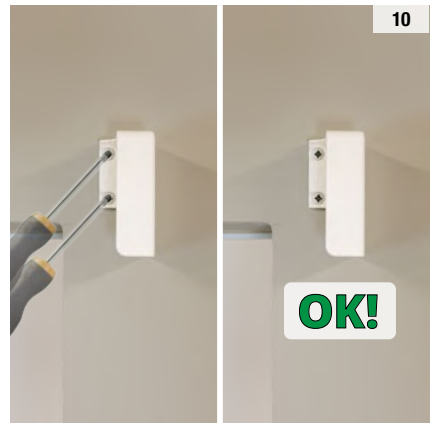
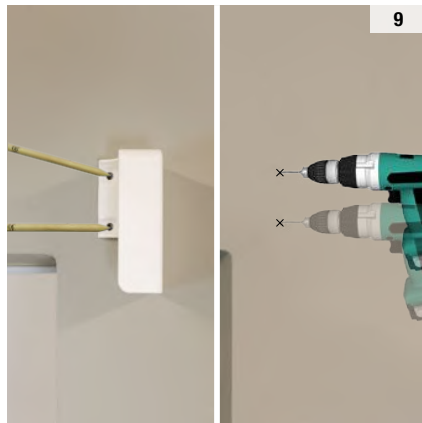
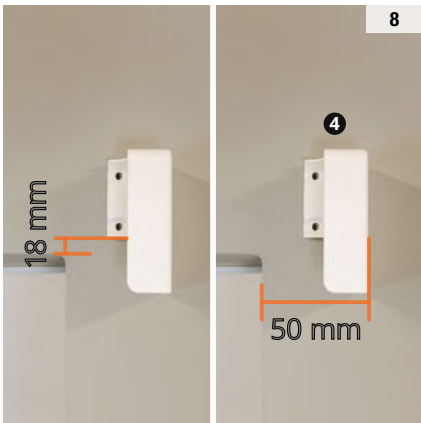
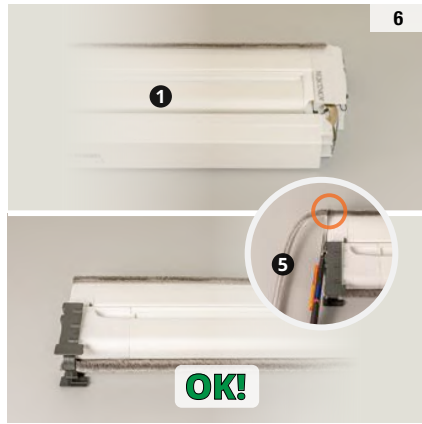
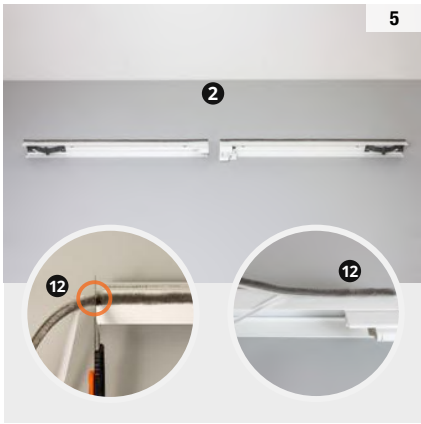
Degrease and dry the fixing surface before applying the double-sided tape: full adhesion is achieved after at least 24 hours.

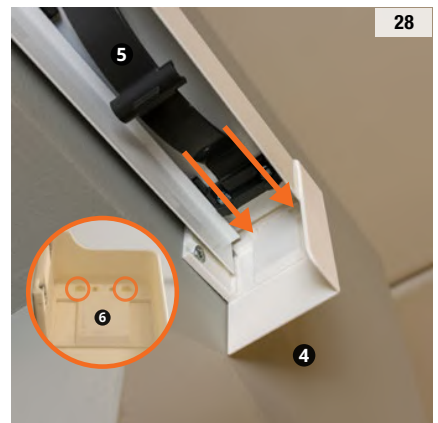
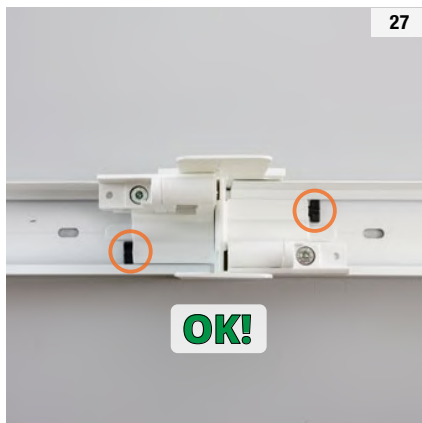
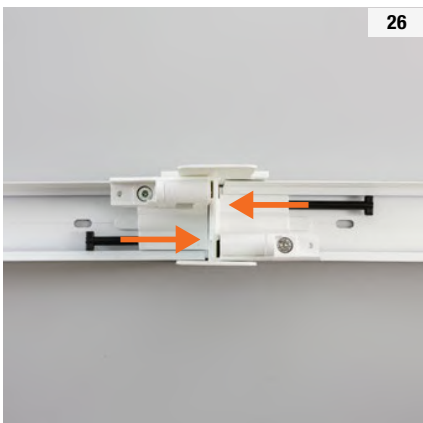
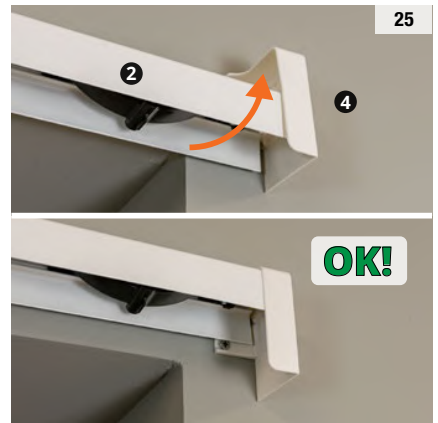
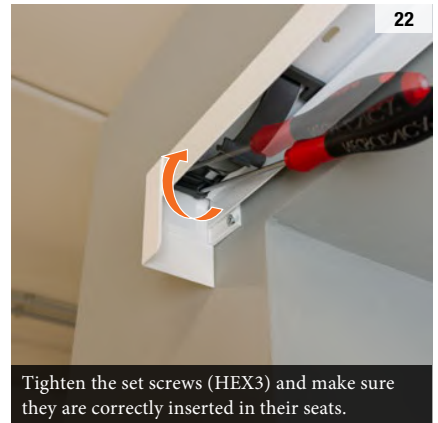
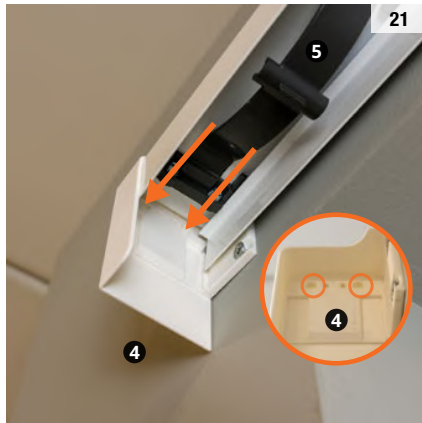
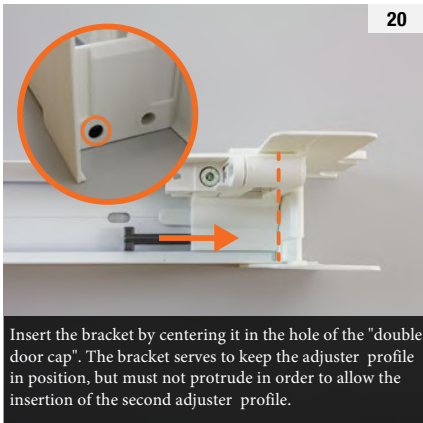
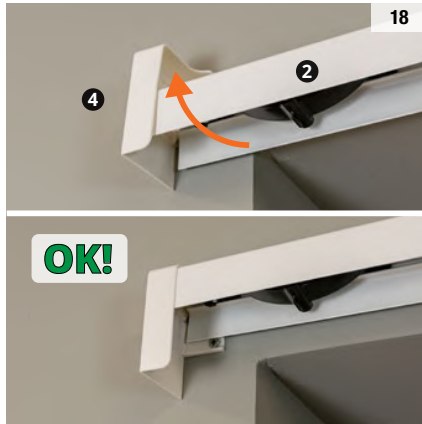


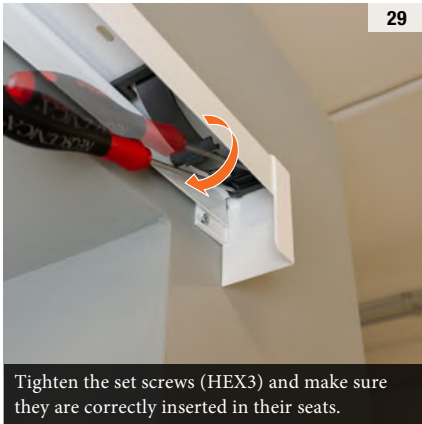
INSTALLATION INSTRUCTIONS

METHOD 4 - 2 DOORS





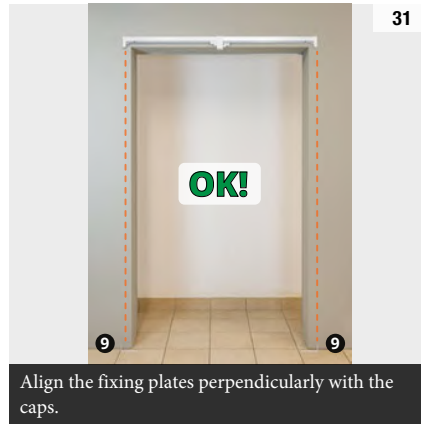




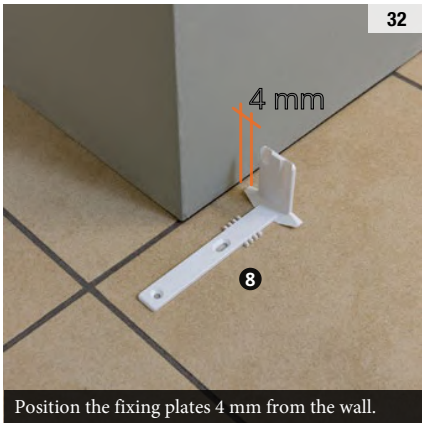
29 Tighten the set screws (HEX3) and make sure they are correctly inserted in their seats.



30 OK!



31 Align the fixing plates perpendicularly with the caps.



32 Position the fixing plates 4 mm from the wall.



33 Installation with double-sided tape. Degrease and dry the fixing surface before applying the double-sided tape: full adhesion is achieved after at least 24 hours.



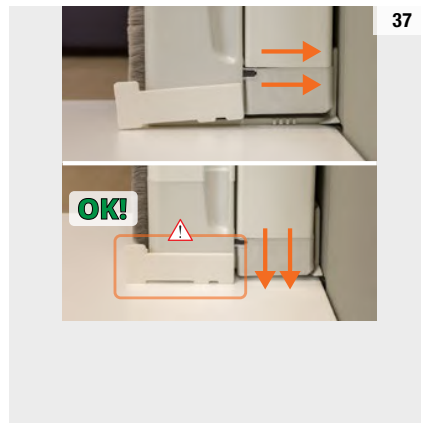
34 Installation with screws.



35 1



36



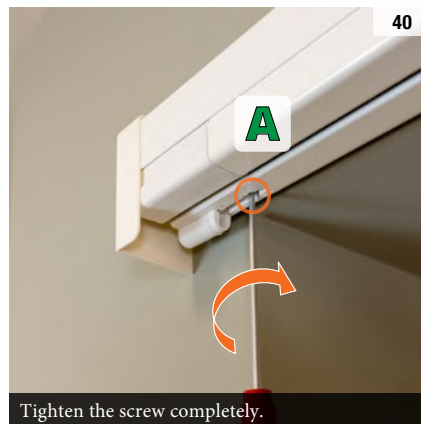
37 OK!



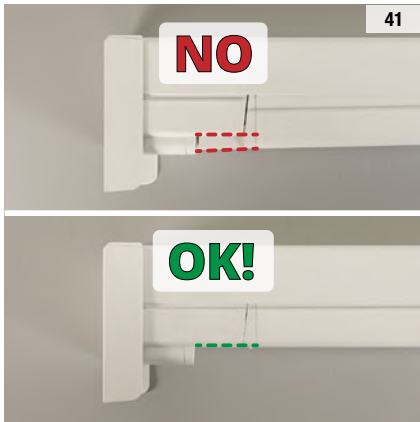
38 OK!



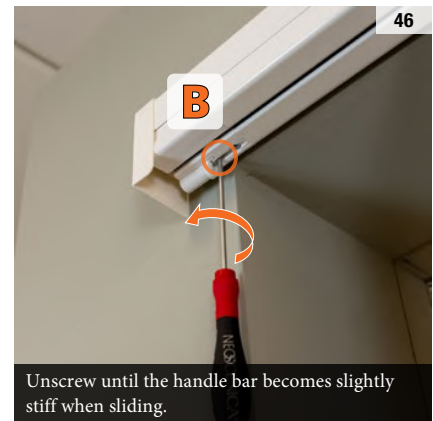
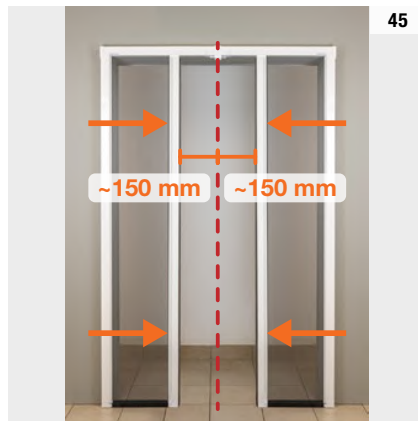
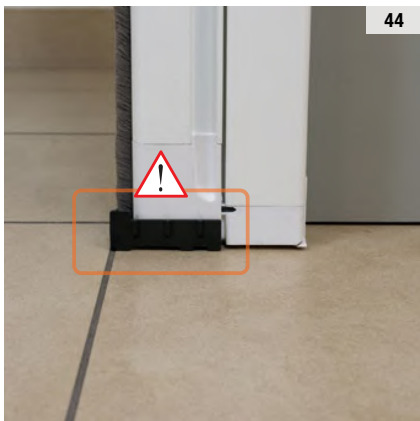
39 Lift guide rail without forcing the movement.



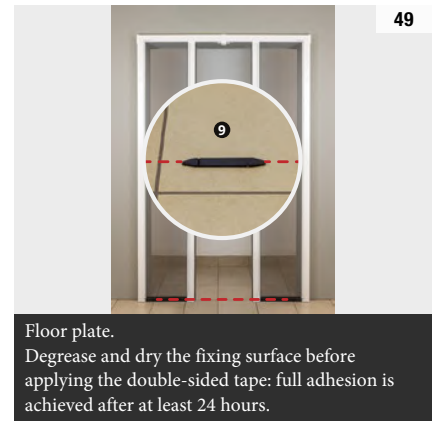
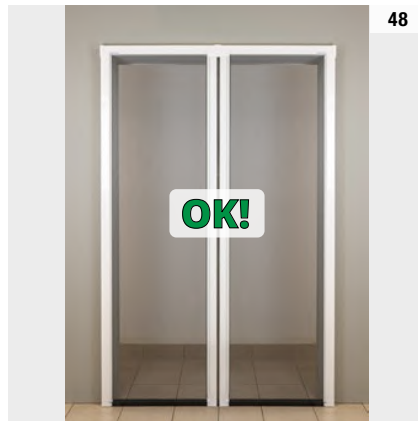
40 Tighten the screw completely.



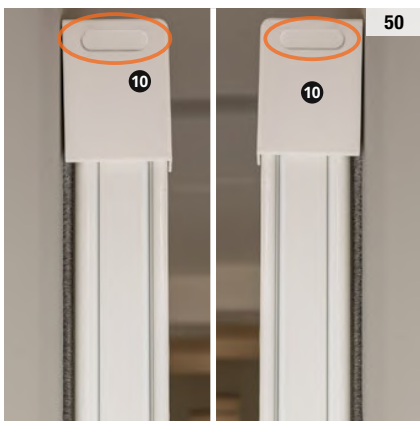
Keep the accessory in case the product needs to be repackaged.



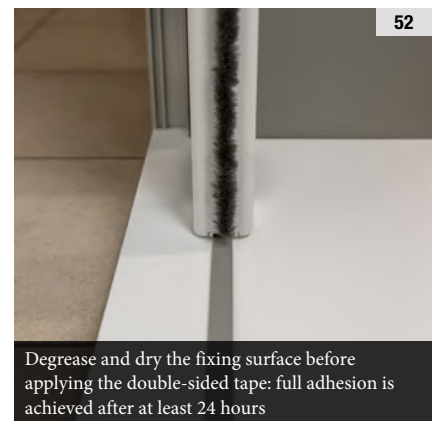
Unscrew until the handle bar becomes slightly stiff when sliding.



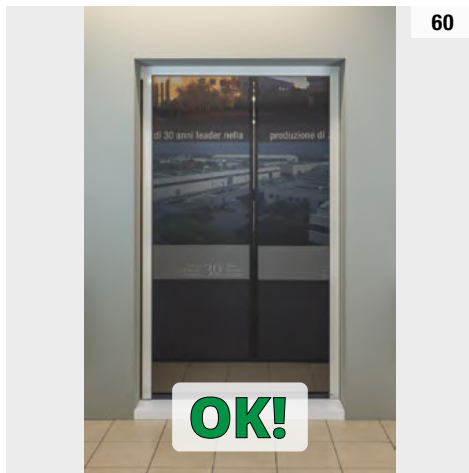
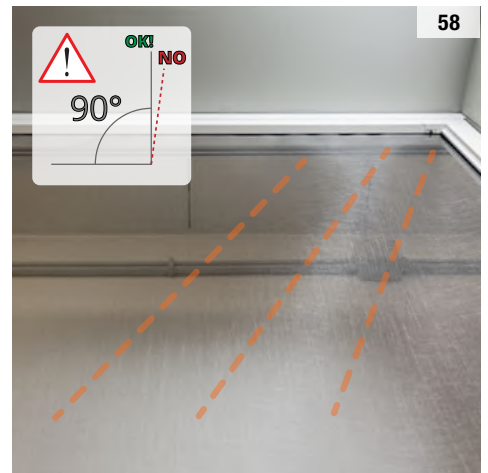
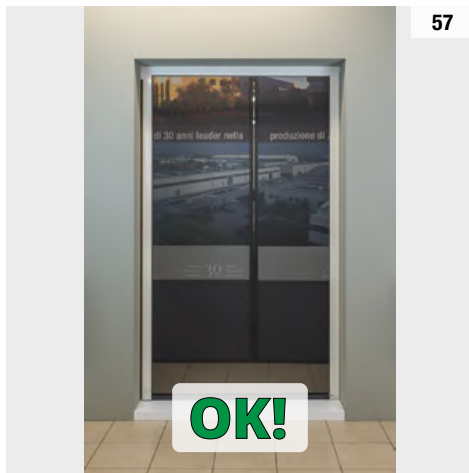
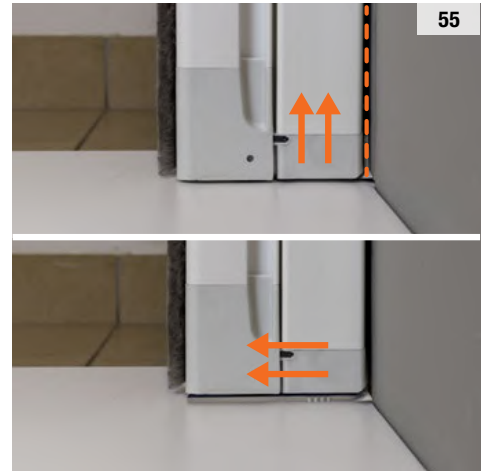
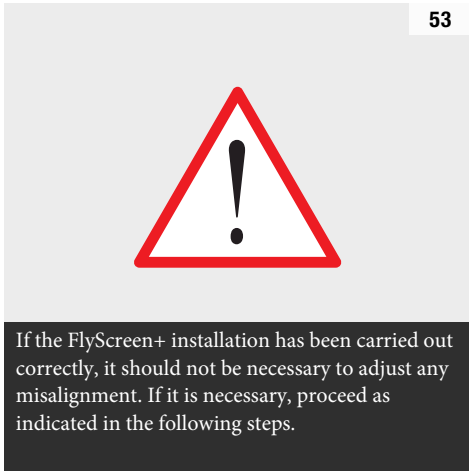
Floor plate.
Degrease and dry the fixing surface before applying the double-sided tape: full adhesion is achieved after at least 24 hours.



Sliding profile. Optional accessory.
Installation at discretion.



Degrease and dry the fixing surface before applying the double-sided tape: full adhesion is achieved after at least 24 hours



TALIUS FLYSCREEN+ AND FLYSCREEN 2D

Use, Installation and Maintenance Manual

1. PURPOSE

These instructions are intended for installers, service personnel, dealers, owners, and users of Talius FlyScreen+ and FlyScreen 2D systems.

This document provides guidance for the safe installation, operation, maintenance, and servicing of these products to ensure reliable performance and long service life.


These instructions should be retained for future reference.

2. PRODUCTS COVERED

These instructions apply only to:

- Talius FlyScreen+ (based on the Bettio Neoscenica platform)
- Talius FlyScreen 2D (based on the Bettio Revolux platform)

No other products are covered by this manual.



Clic-clak® 40 with wind protection
Version 1 - Standard Installation instructions for fly screen


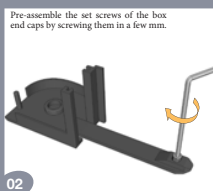
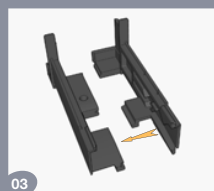
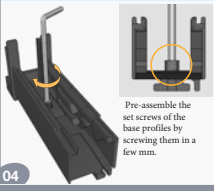
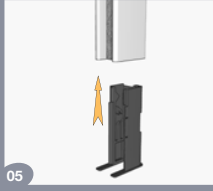

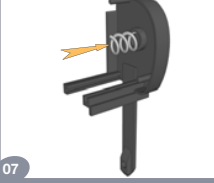

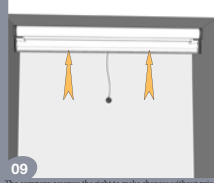
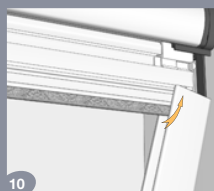
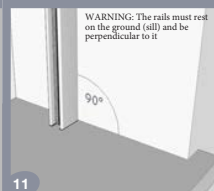

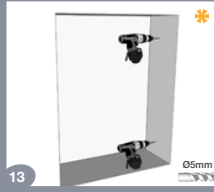
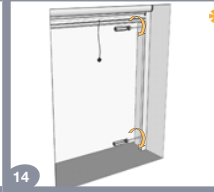

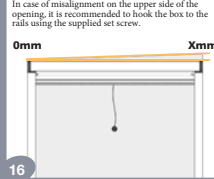

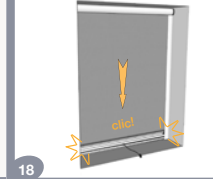
parts list
1 complete box
2 guide rails
1 pair of clic/clak® base profiles
4 STEEL M4X8 pointed screws UNI5923
2 clips
1 hexagonal key 2.5 mm
1 brush for box
1 pair of telescopic end caps

warning
Before installing the fly screen, it is necessary to match each box with its corresponding pair of rails.

Guide Rail

Head rail

The matching criterion is always the same, regardless of the fly screen model which may differ from the one shown.

WARNING: The rails must rest on the ground (all) and be perpendicular to it

90°

Ø5mm

0mm Xmm

In case of misalignment on the upper side of the opening, it is recommended to hook the box to the rails using the supplied set screw.

3. INTENDED USE

Talius FlyScreen+ and FlyScreen 2D are designed primarily to provide protection against insects and small airborne debris while allowing ventilation through openings.

The products are intended for residential and commercial applications where insect screening is required.

The screen is not intended to:

- Prevent falls
- Provide security protection
- Resist impact loads
- Support human weight
- Act as a guardrail or safety barrier

Do not lean, push, sit, climb, or place objects against the screen mesh. Any use other than that described above is considered improper use and may result in damage, injury, or loss of warranty coverage.



Clic-clak® 40 with wind protection

Version 2 - Without Screws

Installation instructions for fly screen

parts list

- | | | |
|----------------|---|--|
| 1 complete box | 1 stop profile | 1 pair of end covers |
| 2 guide rails | 1 pair of fixed base profiles | 4 STEI M4X8 pointed screws UNI5923 |
| | 1 pair of adjustable base profiles with corners | 4 anchor brackets with screws and nuts |
| | | 1 hexagonal key 2.5 mm |

Spring-Loaded Components

FlyScreen+ and FlyScreen 2D contain spring-loaded mechanisms. Improper disassembly may result in sudden release of stored energy. Spring servicing shall only be performed by trained personnel.

Pinch Hazards

Keep hands, fingers, clothing, and other objects away from moving components during operation.

Child Safety

Children should not be permitted to play with the product. Do not allow children to hang from, swing on, or operate the screen in an unsafe manner.

TALIOS FlyScreen 2D
Powered by Motor

Clic-clak® 40 with wind protection
Version 4 - Internal Front

Installation instructions for fly screen

parts list		
1 complete box	1 pair of end covers	1 hexagonal key 2.5 mm
2 guide rails	4 STEI M5X6 pointed screws UNI5927	1 grey brush
1 stop profile	6 front brackets	
1 pair of fixed base profiles	3 pairs of bracket spacers	

Pre-assemble the set screws of the box end pieces by screwing them in a few mm.

Pre-assemble the set screws of the base profiles by screwing them in a few mm.

© 2009 TALIOS

The company reserves the right to make changes without notice.

WARNING

For heights greater than 1200mm, it is recommended to apply two additional side brackets, both for installation type A and B.

6. INSTALLATION REQUIREMENTS

Structural Verification

Prior to installation, verify that the supporting wall, frame, or structure is capable of supporting all operational loads.

The installer is responsible for selecting suitable fasteners and anchors based on the substrate conditions.

Fasteners are not supplied unless specifically noted.

Recommended Fasteners

Wood Framing

- #8 x 1-1/2" corrosion-resistant pan-head or truss-head screws

TALIS FlyScreen 2D
Powered by Better!

Clic-clak® 40 with wind protection
Version 5 - Quick Release

Installation instructions for fly screen

parts list		
1 complete box	4 complete hook pins	1 hexagonal key 2.5 mm
2 guide rails	4 standard hole covers	1 grey brush
1 stop profile	4 hole covers with side lip	
1 pair of fixed base profiles	4 STEI MSX6 pointed screws UNI5927	

Pre-assemble the set screws of the box end pieces by screwing them in a few mm.

01

02

03

04 Choose the position of the hooks according to your needs and cut the brushes following the formula:

$a + b + c = \text{Opening height} - 21\text{mm}$

05

06 Insert the lower hooks up to the calculated height. Insert the brushes (b) and the upper hooks.

07

08

09

10

11 Cut the upper brush following the formula:
 $L = \text{Opening width} - 6\text{mm}$

12

The company reserves the right to make changes without notice.

13

14

15

16 Cut the lower brush following the formula:
 $L = \text{Opening width} - 6\text{mm}$

17

18

19

20 Option 1
Option 2

21

22

23

24

25

26

Unlock the hooks by acting on the back of the lever.

Concrete or Masonry

- 3/16" masonry bit
- Suitable masonry anchors
- #8 x 1-1/2" corrosion-resistant screws

Steel or Aluminum Frames

- #8 self-drilling TEK screws
- Stainless steel or zinc-plated finish

Fastener selection shall be adjusted as required to suit site conditions and structural requirements.

Sealant

Where weather sealing is required, use a high-quality exterior-grade neutral cure silicone sealant suitable for:

- Aluminum
- Vinyl
- Fiberglass
- Wood
- Masonry

7. OPERATION

Operate the screen using the procedures outlined in the product installation instructions.

Always guide the screen smoothly during opening and closing.

Do not force operation.

If resistance is encountered, stop operation and inspect the system for obstructions or damage.

Do not allow the screen to slam open or closed.

8. WIND AND WEATHER CONDITIONS

FlyScreen+ and FlyScreen 2D are insect screening systems and are not intended to serve as storm protection devices.

Retract the screen when:

- High winds are present
- Severe weather is expected
- Excessive screen movement is observed
- Ice accumulation is present
- Snow or freezing conditions may interfere with operation

Wind resistance depends on:

- Screen dimensions
- Installation method
- Fabric type
- Exposure conditions

Refer to current Talius specifications for applicable size and performance limitations.

9. MAINTENANCE

Routine Inspection

Inspect the product a minimum of twice per year.

Recommended inspection periods:

- Spring
- Fall

Check for:

- Mesh damage
- Debris accumulation
- Loose fasteners
- Smooth operation
- Frame damage

Cleaning

Remove dust and debris using:

- Soft brush
- Vacuum cleaner
- Soft cloth

If necessary, clean using mild soap and lukewarm water.

Allow the screen to dry completely before retracting.

Do not use:

- Solvents
- Ammonia-based cleaners
- Petroleum products
- Abrasive cleaning materials

Mesh Inspection

Inspect the mesh regularly for:

- Tears
- Holes
- Excessive wear
- Separation from retaining components

Damaged mesh should be replaced promptly.

10. DEALER MODIFICATIONS

Field Cutting

Field modifications and cut-downs shall only be performed in accordance with current Talius instructions.

Improper modification may affect operation and warranty coverage.

Mesh Replacement

Replacement mesh shall be installed only using approved Talius procedures and components.

Contact Talius Technical Support for current rescreening instructions.

Alternate Fabrics

FlyScreen+ and FlyScreen 2D are designed and tested using approved screen materials.

Substitution of alternate fabrics, including solar screen fabrics such as SunTex® materials, may affect:

- Retraction performance
- Operating force
- Durability
- Warranty coverage

Consult Talius prior to installing alternate fabrics.

11. PRODUCT IDENTIFICATION

Each product is identified by a Talius serial number and order number.

Record this information for future service, warranty, and replacement part requests.

12. PACKAGING, HANDLING AND STORAGE

Products longer than 96 inches (2440 mm) should be handled by two people.

When transporting or storing products:

- Protect frames from bending
- Protect mesh from damage
- Do not stack heavy objects on packaged screens
- Store in a clean, dry location
- Protect from prolonged exposure to moisture

13. SERVICE AND REPAIRS

Repairs involving springs, operating mechanisms, or structural components shall be performed only by qualified personnel.

Use only approved replacement parts.

Contact Talius Technical Support for service assistance.

14. WARRANTY

Warranty coverage is provided in accordance with the current Talius Limited Warranty.

Refer to the warranty document supplied with the product for complete details regarding:

- Coverage
- Limitations
- Exclusions
- Claims procedures

Use of non-approved components, unauthorized modifications, improper installation, abuse, or misuse may void warranty coverage.



TALIUS[®]

SALES 6060 Silver Dr, Burnaby, V5H 0H5 Canada

MANUFACTURING 5501 - 46 Ave SE, Salmon Arm, BC, V1E 1X2

Canada TOLLFREE888.550.6205

info@talius.com

www.talius.com